

EDIE CREEK



A N G U S

19TH ANNUAL

BULL SALE



MARCH 14, 2026

SALE TIME: 1 P.M. CST

59018 Stoneridge Rd, Anola, Manitoba

SELLING 56 RUGGED 2-YEAR-OLD BULLS

41 Black Angus • 10 Red Angus • 4 Black/Red Carriers • 1 Fleckvieh X Angus

WELCOME TO THE 19TH ANNUAL EDIE CREEK RUGGED 2-YEAR-OLD BULL SALE!

Welcome and thank you for your interest in our 19th Annual Bull Sale. We appreciate the support of our repeat buyers and are excited to welcome new cattlemen to the program.

What an incredible ride 2025/2026 has been. I can remember 15–20 years ago when yearlings were worth \$1.10/lb and the cattle enterprise budgets didn't look good. Today, those same yearlings are worth nearly five times as much.

The lean years taught us tough lessons that still drive our decisions today. Maximizing grazing days and running a fertile, environmentally adapted cow herd remains the most profitable path forward for us as cow-calf operators.

The beef industry pushes maximums—growth and carcass numbers—but the cows that actually make money are the low-input kind that calve early every year and raise a live calf without issue.

When I spoke with Burke Teichert about improving cow herd fertility, he said one of the best ways to make real progress is to keep replacements from bulls born in the first cycle—backed by cow families with a proven history of calving early, generation after generation. At Edie Creek Angus, you can find these bulls. In this catalogue 95% of the bulls were born in the first cycle, and 91% of their dams were as well.

Take advantage of this sale offering and invest in these bulls that can help put more live calves on the ground—and more profit in your pocket for years to come. Edie Creek Angus genetics can efficiently make a lasting difference in your cow herd.

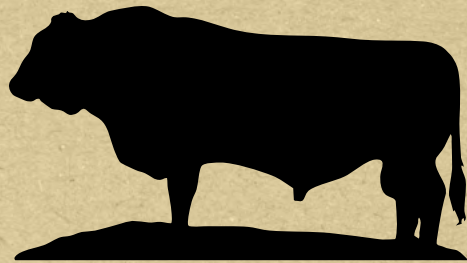
Please give me a call, text or email with any questions you have about the sale details or the bulls. I enjoy going through the catalog with folks to find options that fit best.

See you on sale day!

Stefan Bour



EDIE CREEK



A N G U S

19TH ANNUAL

**BULL
SALE**

MARCH 14, 2026

SALE TIME: 1 P.M. CST

59018 Stoneridge Rd, Anola, Manitoba

Stefan Bouw
204-232-1620

Connect with us:



ediecreekangus.com

On Offer:

56 BULLS

41 BLACK ANGUS - 10 RED ANGUS

4 BLACK/RED CARRIERS - 1 FLECKVIEH X ANGUS

The sale will be in Anola, Manitoba at the Edie Creek Angus Headquarters. Type Edie Creek Angus in Google Maps, and it will bring you to us. The video sale will be held in our heated farm yard shop, and the bulls will be in 3 pens, just north of the home yard. We are about 20 minutes East of Winnipeg.

VIDEO SALE LOCATION:

59018 Stoneridge Rd, Anola, Manitoba

VIDEO ONLY SALE: Videos of the sale animals will be played at the sale.

SALE ORDER: Bulls will sell in catalog order.

VIEWING LOCATION: You are welcome to come in the days before the sale so that we can tour you through the cows & bulls. **59018 Stoneridge Road, Anola, Manitoba.**

AUCTIONEER: Tyler Slawinski • (204) 672-0450

RINGMEN:

Kirk Kiesman • (204) 768-0019

Tyson Cook • (204) 881-5659

VIDEOS OF THE BULLS: Please head to our website for links to videos and Team Live Auction Bidding.

SUPPLEMENT INFORMATION: Scrotal circumferences & weights will be available on sale day.

SEMEN INTEREST: Edie Creek Angus reserves a 1/3 semen interest & the right to collect semen for in-herd use on all bulls selling at your convenience and our cost.

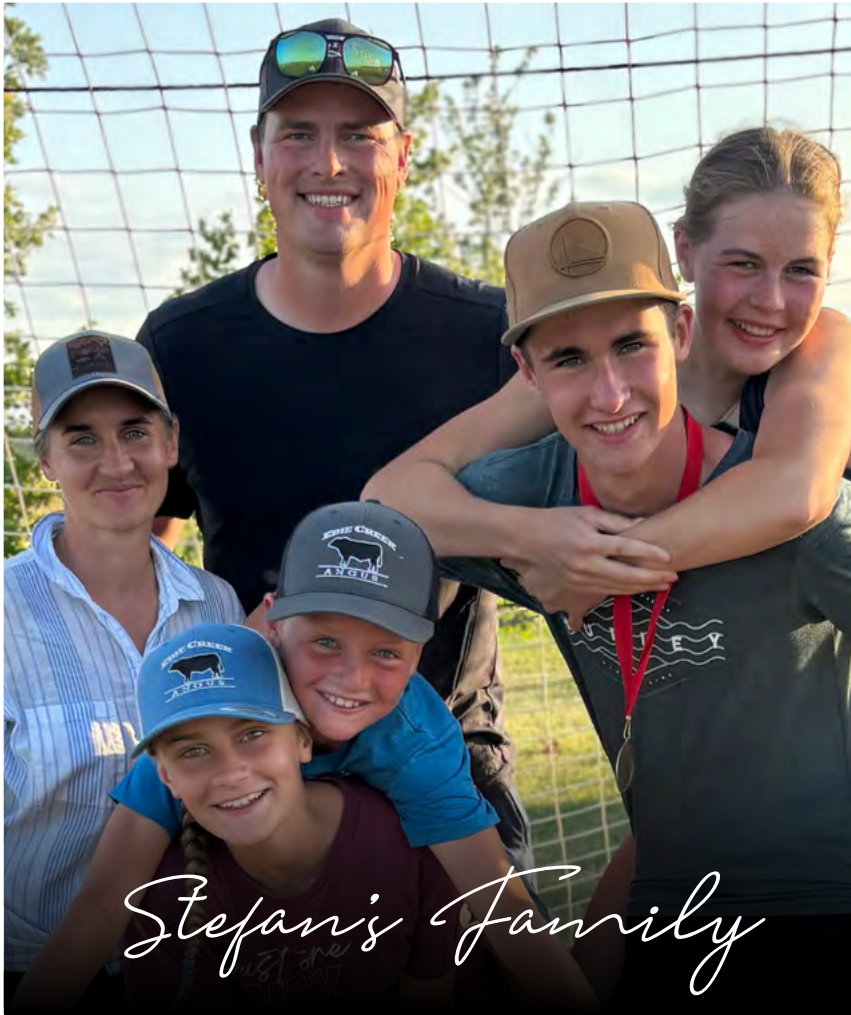
LUNCH: Come early on sale day to look through the bulls and enjoy lunch with us! Lunch will be served in our heated shop.

Online bidding hosted by:



**Scan for Videos
and Online Bidding**





Stefan's Family



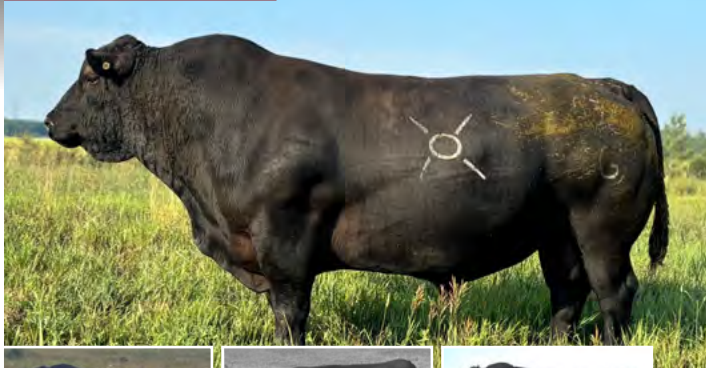
Marilyn & Herman Bouw





REFERENCE SIRES

R1 - OCC Gate Keeper 678G

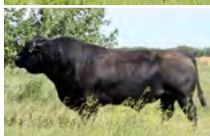


OCC Blueprint 632B - Sire of Gate Keeper

OCC Dixie Erica 628W

OCC Moderator 825M - Paternal Grand sire of Gate Keeper

R2 - EDIE CREEK BIG TIME 53F



Edie Creek Big Time 848C - Sire of Big Time 53F

R3 - EDIE CREEK NORTH STAR 64H



Edie Creek Great One 77F - Sire of North Star 64H

OCC Dixie Erica 606S - Dam of North Star 64H

R1 OCC GATE KEEPER 678G

TATTOO: IMP 678G DOB: March 30, 2019 REG#: 2301837

CALVING EASE	3.5	O C C MODERATOR 825M	O C C HEADLINER 661H OSF
		O C C BLUEPRINT 632B	O C C DIXIE ERICA 845K
UDDER	5	O C C DIXIE ERICA 628W	O C C PRACTICAL 841P
			CHLOE DIXIE ERICA 7313
FLESHING	4.5	O C C GREAT PLAINS 943G	N BAR EMULATION
		O C C DIXIE ERICA 638D	DIXIE ERICA OF C H 1019
AOD	8	O C C DIXIE ERICA 721Y	O C C PRACTICAL 841P
			O C C DIXIE ERICA 808U

EPD'S	BW: 0.6	WW: 30	YW: 59	MILK: 21	CE: 10	MCE: 8
-------	---------	--------	--------	----------	--------	--------

- Gate Keeper is a friendly bull that we can walk up to and scratch. We are expecting great udders from this bull with him linebred to OCC Practical, and having the OCC Dixie Erica 628W cow in his pedigree, whom we have seen a number of times.
- 678G was the highest-priced bull we have ever bought, and he was one of the high-selling bulls at the 2021 OCC sale. He represents balance in the gene pool, blending the Traveler, Rainmaker, Rito & Emulation lines that have built the OCC program.
- We brought Gate Keeper up from Kansas to add fleshing ability & udder quality to our gene pool. His first daughters calved in 2024 and had very tidy udders.
- We are very excited about his sons in this sale. They check off all the boxes - Moderate, Maternal, Easy Calving, Easy Fleshing.

R2 EDIE CREEK BIG TIME 53F

TATTOO: ECA 53F DOB: April 28 2018 REG#: 2042537

CALVING EASE	3	O C C BIG TIME 746Z	O C C REAR END 751R
		EDIE CREEK BIG TIME 848C	O C C DIXIE ERICA 771R
UDDER	5	O C C DIXIE ERICA 693N	O C C HEADLINER 661H OSF
			O C C DIXIE ERICA 907C
FLESHING	4.5	CROWFOOT MACHO 4549P	O C C MAGNUM 749M
		CROWFOOT VALLEY CJ ERICA 7723T	CROWFOOT BLACKBIRD 2537M
AOD	15	CROWFOOT KAWICH 1758L	BASIN PARTNER 137H
			GLADWALL KAWICH LADY 7171

EPD'S	BW: -2.2	WW: 37	YW: 54	MILK: 21	CE: 12	MCE: 13
-------	----------	--------	--------	----------	--------	---------

- Big Time 53F puts a lot of longevity in a pedigree! His dam raised her last calf as a 15-year old cow. His sire's dam (693N) raised her last calf at 17 years old. And both the dam and granddam of 693N raised calves till about 20 years old!!
- His sire, Big Time 848C has some really excellent daughters in our herd, and also worked at VeeFee Angus in Lloydminster.
- This bull is a great example of the result of focusing on profitable, maternal genetics. We allow our cattle to be sorted by keeping pressure on them in their environment. When cows prove themselves out and leave a solid line of daughters, we are confident in the success her son will bring.

R3 EDIE CREEK NORTH STAR 64H

TATTOO: ECA 64H DOB: April 29 2020 REG#: 2188987

CALVING EASE	4	EDIE CREEK GREAT ONE 79Y	O C C GREAT PLAINS 943G
		EDIE CREEK GREAT ONE 77F	O C C JUANADA 737L
UDDER	5	CH GEORGINA 626	O MR BANJO 41 147 LOGO
			CH GEORGINA 369
FLESHING	4.5	O C C GREAT PLAINS 943G	N BAR EMULATION
		O C C DIXIE ERICA 606S	DIXIE ERICA OF C H 1019
AOD	17	O C C DIXIE ERICA 612H	D H D TRAVELER 6807
			O C C DIXIE ERICA 803F

EPD'S	BW: 0.1	WW: 42	YW: 70	MILK: 24	CE: 7	MCE: 5
-------	---------	--------	--------	----------	-------	--------

- Edie Creek North Star 64H puts together two terrific animals for us: Sire Great One 77F was one of the best bulls we've ever raised, and his dam OCC Dixie Erica 606S would arguably be the best cow we've ever had.
- OCC Dixie Erica 606S raised her last calf as a 17-year old cow. She calved first cycle every year for us. She had incredible fertility, perfect feet, and a near-perfect udder. She left behind a strong cow family with daughters and grand daughters continuing on her tradition of elite fertility. We have flushed her and used a number of her sons over the years.
- The sire of North Star 64H is Edie Creek Great One 77F. 77F was a prolific breeder having a 97% breed-up in our worst drought on 50 2-4-year old cows.
- North Star is double bred to OCC Great Plains 943G, whom we consider to be the greatest EXT son of all time and the disposition is better on Great Plains cattle than original EXT cattle. 64H is also line bred to the great Dixie Erica of CH 1019 cow 4 times! 1019 in the pedigree brings tidy udders as well as exceptional longevity & fertility.
- Use 64H to add body length, improve udders and refine your cow herd.

REFERENCE SIREs

R4 - EDIE CREEK GATE KEEPER 47K



R4		EDIE CREEK GATE KEEPER 47K	
TATTOO: ECA 47K		DOB: April 30, 2022	
REG#: 2350272			
CALVING EASE	4.5	O C C BLUEPRINT 632B	O C C MODERATOR 825M
UDDER	4	O C C GATE KEEPER 678G	O C C DIXIE ERICA 628W
FLESHING	5	O C C DIXIE ERICA 638D	O C C GREAT PLAINS 943G
AOD	9	CAR CHINNOOK 786	O C C DIXIE ERICA 721Y
		MH FRANCES 621D	A A R REALLY WINDY 1205
		MH FRANCES 327	CAR MISS MARIE 5109
			COLE CREEK CEDAR RIDGE 1V
			MH FRANCES 720
EPD'S	BW: -1.0	WW: 37	YW: 67
	MILK: 24	CE: 11	MCE: 7

- Gate Keeper 47K has been a dominant breeding bull. He has the Bonsma reverse wedge shape and he has passed that on to his sons.
- You will find many calving ease sons in this catalog that will catch your eye and simplify calving heifers.
- A number of 47K calves have been produced from Gate Keeper 678G daughters, and the linebreeding results look very promising.

R5 - EDIE CREEK EQUINOX 130K



Loyning Equinox 7 - Paternal Grandsire of 130K

R5		EDIE CREEK EQUINOX 130K	
TATTOO: ECA 130K		DOB: May 11, 2022	
REG#: 2302860			
CALVING EASE	5	LOYNING EQUINOX 7	HORSE BUTTE 6141 OF 3141
UDDER	4	LOYNING 7 EQUINOX 0009	JAD ESTER 3750
FLESHING	4	LOYNING ESTER 7008	PAPA FORTE 1921
AOD	11	O C C HUNTER 928H	HBR SHOSHONE ESTER 7133
		EDIE CREEK DIXIE ERICA 7C	O C C FOCUS 813F
		O C C DIXIE ERICA 606S	O C C DIXIE ERICA 960E
			O C C GREAT PLAINS 943G
			O C C DIXIE ERICA 612H
EPD'S	BW: -1.9	WW: 38	YW: 61
	MILK: 21	CE: 12	MCE: 9

- Equinox 130K is the next step in our Loyning Equinox sire line. 130K brings very solid calving ease along with a strong emphasis on structure, fertility and longevity. His dam will be 11 years old this year and is the spitting image of her dam the great OCC Dixie Erica 606S cow who raised calves for us until she was 17 years old and is also the dam of Edie Creek North Star 64H. The 606S cow family is very prepotent.
- We bought Equinox 0009 from Loyning Angus in Bridger, Montana to provide more of the Shoshone line of genetics to our herd. We have been heavily using OCC Great Plains and the full sister to Great Plains (OCC Dixie Erica 907C) in our herd as cow makers, and have seen how the Shoshone gene pool can produce similar cattle. Equinox is linebred to the Shoshone Ester cow family. His dam is a productive cow who is very fertile and productive. We have been especially pleased with the maternal intelligence of our first Loyning Equinox 0009 daughters. We also were very impressed with his paternal grandsire, Horse Butte 6141 of 3141, in the Dimond Angus Ranch breeding program in Wood, SD. The daughters of 6141 were hardy, feminine and fertile.
- 130K has been breeding 60-70 heifers every year alongside Gate Keeper 47K since they were yearlings.



Stefan was honoured to be interviewed by Clay Conry on the Working Cows podcast again - Episode # 415!! If you'd like to hear about our winter grazing journey, take a listen to this episode:

"Working Cows - Regenerative Ranching to Maximize Profitability and Soil Health - Profitable Winter-Feeding Strategies that Move the Needle"

REFERENCE SIRES

R6 - RED EDIE CREEK EASY RED 19F



OCC Easy Red 868A - Sire of 19F

ECA 45B - Dam of 19F

R6 RED EDIE CREEK EASY RED 19F

TATTOO: ECA 19F DOB: April 22, 2018 REG#: 2058778

CALVING EASE	4	RED OCC EASY RED RED OCC EASY RED 868A RED OCC VANESSA 797Y	RED OCC LINEBRED 801R RED OCC VANESSA 829S OSF RED OCC RED ROCK 864U OSF RED OCC VANESSA 929T CROWFOOT 6004S RED CROWFOOT BRNDINA 6359S RED CROWFOOT RAMBLER 1038L RED CROWFOOT LADY 1131L
UDDER	4		
FLESHING	5	RED CROWFOOT MOONSHINE RED EDIE CREEK LADY 45B RED CROWFOOT LADY 6503S	
AOD	10		
EPD'S		BW: -1.5 WW: 34 YW: 68	MILK: 26 CE: 10 MCE: 6

- We were fortunate to raise and sell a half interest in Easy 19F to Gemstone Cattle Co.
- His sire OCC Easy Red 868A was a one-of-a-kind bull in Canada. We have found that OCC Easy Red 868A does phenotypically what we are trying to do with our Black Angus program in a linebred, genetically prepotent RED package! 868A will fix what the Red Angus breed needs fixing: foot quality, natural muscling ability & ease of fleshing on forage alone. He traces 9x to Dixie Erica 1019, the foundation cow of the black program at OCC and 5x to PCC Colorado Hobo. 868A also Leptin Genotype tested as "TT". A large chunk of our Red Angus herd are Easy Red 868A daughters. He will play a foundational role in our Red Angus herd for years to come.
- The dam of Easy 19F is a larger framed cow who is a daughter of our best Red Angus cow—Red Crowfoot Lady 6503S, who had a great udder & perfect feet. 6503S worked here until she was 16.

Red Calvo Nebula 67C - Sire of Red Edie Creek Nebula 13K



ECA 75F - Dam of 13K

R7 RED EDIE CREEK NEBULA 13K

TATTOO: ECA 13K DOB: April 18, 2022 REG#: 2289608

CALVING EASE	4	RED BECKTON NEBULA P P707 OSF RED CALVO NEBULA 67C RED CALVO ROSE 8Z	RED BECKTON NEBULA M045 OSF RED BECKTON LANA M809 EP RED BECKTON NEBULA P P707 OSF RED BECKTON ROSE U272 JJ RED OCC EASY RED RED OCC VANESSA 797Y RED EDIE CRK NORSEMAN KING 91T CROWFOOT PRINCESS 3075N
UDDER	4		
FLESHING	4	RED OCC EASY RED 868A RED EDIE CREEK PRINCESS 75F RED EDIE CREEK PRINCESS 120C	
AOD	8		
EPD'S		BW: -2.5 WW: 43 YW: 76	MILK: 29 CE: 12 MCE: 4

- Nebula 13K was one of the most physically impressive bulls we have raised. He had great natural thickness and muscling. His genetics can help change a set of high input type cows and bring down frame size and increase forage efficiency and capacity.
- Princess 120C is one of my favourite red cows. She is angular and feminine with a solid udder and has calved in the first cycle every year except once. Hopefully she will give us another bull like Nebula 13K. We lost 13K due to injury in a multi-sire breeding group.



WHY BUY EDIE CREEK BULLS?

There's No Free Lunch! We are over 20 years along in our journey of genetic progress and have learned many lessons on the way! We've learned that there is no such thing as a "free lunch": not in physics, economics, or in producing beef cattle. The math is simple. The more time and money you invest into your cattle the more you must get out of them. Solar Energy and Hybrid Vigour are the closest things we have to a "free lunch", so we need to maximize their cumulative benefits, with cow herds that efficiently turn low quality forages (grass) into high quality protein (beef). Tighten up the gene pool in your cow herd and cross them with some terminal bulls to get some free pounds! Before the drought of 2021, winter or summer, our cows took care of their own daily needs for over a decade on a zero starch, forage-only program. We have used this as a selection pressure on our cow herd. Not all cows are built to thrive and rebreed on a forage-only diet. We have moved forward with the cow families that remain. They are fertile, moderate 1250lb cows that maintain excellent udders while calving on pasture, and carefully mother their calves!

Stacking Teenage Cows in The Pedigree To build on a foundation of longevity, we use Herdsires that have dams and granddams that have produced calves well into their teens. The oldest dam (recently departed) would be 20 years old OCC Dixie Erica 693N and her dam produced until she was 19 years old.

Reproduction is the most important factor affecting profitability. We have tightened the screws on reproductive longevity by shortening our breeding season and using multi-sire breeding groups. Heifers are exposed to bulls for 45 days, and the cows see bulls for 50 days. The two main cow herds had Angus bulls for the first 30 days, and a Fleckvieh bull for the last cycle—thus ensuring only the most fertile females produce offspring that we select purebred parent stock from. Multi-sire breeding groups ensure that the most fertile bulls get the job done — another step in improving fertility. After all, reproduction is 5x more important than growth rate, and 10x more important than carcass quality when it comes to your profit.

The Edie Creek Gene Pool Our gene pool stems from proven descendants of renowned maternal bloodlines such as Traveler, Emulation, Shoshone, Quantum & Wye that have thrived in low-input environments across the continent. We stack cows and cow families in our pedigrees that have raised calves every year into their teens. This enables us to offer a more consistent pen of bulls every year: prepotently bred bulls which stamp a consistent pen of calves, including daughters that can be counted on to become reliable mama cows.

Our Cattle Are Not Perfect. But They Are Bred For A Specific Purpose Cattle have vast complexities & wide-ranging genetic expressions in differing environments. Pursuing profitable, ranch adapted cattle requires the same maternal performance traits, no matter where you are. With the complexities of genetics, we rely on animals that have performed in the environment we ask them to, to show us who to select as breeding stock. This method of selection has taught us a lot over the years. Our cattle are not perfect. But they are bred for a specific purpose. Time and experience has shown performance and carcass EPD's can not guide the selection of a functional cowherd in real-world conditions, and are in fact antagonistic traits to fertility, longevity and functionality in the cow herd. Many breeding programs claim their bulls can do all things - Maximizing growth and offering maternal greatness in one

package. There is no moderate-framed cow herd that comes from using bulls bred for maximizing growth. You can't get a 1250lb cow if the bred heifer is weighing 1250lbs. Same goes for the bulls you use - 2yr old bulls should not weigh 1800-2000 lbs if you expect their daughters to be moderate. Form Follows Function!

Bigger Weaning Weights Doesn't Equate to More Profit Feeding big cows means big maintenance(feed) costs every year. Bigger weaning weights ideally will be achieved from using the benefits of hybrid vigour and Terminal Sires being mated to moderate cows. Keeping replacement heifers out of Terminal (growth) bulls that have never been selected for cowherd FERTILITY will steal your chance at optimizing profit, it results in reduced fertility and cow-herd frame size creep that costs you more to feed every year! Terminal-Maternal Cross- breeding systems are the most efficient way to produce beef cattle. Profitability falls by the way-side when chasing maximum production levels.

Establish an Efficient, Maternal "Cowherd Factory" For Yourself! Our bulls are bred with generations of fleshing ability, fertility, capacity, correct feet, longevity and udder quality. Edie Creek bulls will sire calves that are born easily and nurse quickly. They will establish an efficient, maternal "Cowherd Factory" from which you can then mate with terminal sires to add hybrid vigour performance and the "flavour of the day" in hide colour. Doing this will create a functional, longliving cowherd able to wean calves with maximum efficiency in your commercial ranch environment.

Carefully Developed - Built To Breed More Cows When you buy 2-year-old bulls from Edie Creek Angus, you get a carefully developed breeding bull. You can turn these Rugged 2-yr olds out and expect them to breed more cows than yearling bulls & come back in better shape. They are more durable and last under real-world breeding conditions. Longevity is as important in your Herd Bulls as it is in your cowherd! By developing them for an additional year it allows us to sort them in our pastures instead of yours.

Customer Focused Our mission is to improve the quality of life and profitability of our customers. Cows that work for you, that thrive in the elements. Designed to work in breeding systems that allow you to optimize beef production per acre by providing efficient cows that can be terminally bred to produce marketable calves as needed. Improvement of your profitability means we have been successful.

I really enjoy talking about beef production, so please give me a call or stop by for a tour and we can talk about beef production systems, our breeding program, or any of the cattle for sale.

Stefan Bour





LOT	1	EDIE CREEK LEGACY 6M	
		TATTOO: ECA 6M	DOB: April 23 2024 REG#: 2407734
BORN 1ST CYCLE?	YES	O C C ECHELON 857E O C C LEGACY 839L	D H D TRAVELER 6807 DIXIE ERICA OF C H 1019
CALVING EASE	3	O C C DIXIE ERICA 960E	O C C ANCHOR 771A DIXIE ERICA OF R R 4345
UDDER	4	MH TUBBY 56 EDIE CREEK BETSY 12E	LODGE OF WYE M H MINA 836
FLESHING	4.5	EDIE CREEK BETSY 96B	EDIE CREEK 839L 298 LEGACY 5Y EDIE CREEK 839L BETSY 3X
BW: 70		DAM BW: 77	DAM WT: 1370
		AOD: 7	1 ST CYCLE DAM: YES

- OCC Legacy 839L is one of the best bulls we have ever used for making functional females that work for a long time. If you want an idea of what Lot 1 will mature into, take a look at the picture of Legacy and his paternal grandsire Echelon. Legacy sons have always been balanced in their traits and very high libido bulls for us.
- The dam of this bull has calved first cycle every year, has massive capacity and is very easy-fleshing! What a great momma cow she has been. I love our MH Tubby Daughters. Betsy 12E had one of the best Gate Keeper sons in last year's sale.
- OCC Legacy is also found a little further back in this bull's pedigree. Betsy 96B is the result of a half-sib mating—both of her parents are sired by OCC Legacy 839L. There is no guessing with this bull, he's solid.



Edie Creek Betsy 12E - Dam of Lot 1



OCC Legacy 839L - Sire of Lot 1



OCC Echelon 857E - Paternal Grand Sire of Lot 1



2

LOT 2 EDIE CREEK NORTH STAR 23M
 TATTOO: ECA 23M DOB: May 1, 2024 REG#: 2406170

BORN 1ST CYCLE?	YES	EDIE CREEK GREAT ONE 77F EDIE CREEK NORTH STAR 64H O C C DIXIE ERICA 606S	EDIE CREEK GREAT ONE 79Y CH GEORGINA 626 O C C GREAT PLAINS 943G O C C DIXIE ERICA 612H O C C SENTINEL 714S O C C DIXIE ERICA 859T CROWFOOT JOKER 6172S CROWFOOT CH REV ROSE 1627L
CALVING EASE	2		
UDDER	4	O C C WORTHY MAN 967W EDIE CREEK REV ROSE 68E	
FLESHING	5	XO CROWFOOT REV ROSE 8816U	
BW: 94		DAM BW: 80	DAM WT: 1195
		AOD: 7	1 ST CYCLE DAM: YES

- A powerful-made North Star son. This bull has extra capacity and growth. He was in the top 5 heaviest bulls to come off grass last fall.
- We purchased his maternal grand dam as one of the high-selling cows from the 2013 Crowfoot dispersal. She was an attractive feminine cow and embryo donor for us. There is a little more milking ability in this cow family.
- This deep-chested bull is an impressive individual and he walks around like he knows it!



DDA Melisa 545 Maternal Granddam of Lot 3

LOT 3 EDIE CREEK NORTH STAR 89M
 TATTOO: ECA 89M DOB: May 12 2024 REG#: 2407783

BORN 1ST CYCLE?	YES	EDIE CREEK GREAT ONE 77F EDIE CREEK NORTH STAR 64H O C C DIXIE ERICA 606S	EDIE CREEK GREAT ONE 79Y CH GEORGINA 626 O C C GREAT PLAINS 943G O C C DIXIE ERICA 612H O C C EMBLAZON 854E D D A MELISA 824 BEAR OF WYE UMF 6591 D D A MELISA 115
CALVING EASE	2		
UDDER	4.5	DDA EMBLAZON 27C MH MELISA 39	
FLESHING	4.5	D D A MELISA 545	
BW: 93		DAM BW: -	DAM WT: 1260
		AOD: 11	1 ST CYCLE DAM: YES

- A unique pedigree and bull. If you like having hard-working, teenage cows in your herd bull's pedigree take a look at this guy!
- His dam (Melisa 39) is a direct daughter of the Howrey Angus foundation female—DDA Melisa 545. Melisa 39 is also linebred to 545, with 545 also showing up as the dam of DDA Melisa 824 who lived to be 21 years old and played a large role in the Diamond D Angus herd in Montana.
- If you are wondering if linebreeding really does increase consistency—Melisa 39 stamps her bulls with the same look, all having strong similarities to Bear of Wye—the sire of Melisa 545.



Bear of Wye - Sire of DDA Melisa 545



LOT	4	EDIE CREEK NORTH STAR 74M	
		TATTOO: ECA 74M	DOB: May 9, 2024
BORN 1ST CYCLE?	YES	EDIE CREEK GREAT ONE 77F EDIE CREEK NORTH STAR 64H OCC DIXIE ERICA 606S	EDIE CREEK GREAT ONE 79Y CH GEORGINA 626 OCC GREAT PLAINS 943G OCC DIXIE ERICA 612H PINEBANK WAIG 31/95 PINEBANK 639/88 SHOSHONE FRANZ 419 MH MELISA 247
CALVING EASE	2		
UDDER	4	PINEBANK WAIGROUP 41/97 EDIE CREEK MELISA 3J	
FLESHING	4.5	MH MELISSA 633	
BW: 83		DAM BW: 76	DAM WT: 1190
		AOD: 3	1 ST CYCLE DAM: YES

- Lot 4 is a very well put-together bull. He is built strong and smooth and should cover a lot of ground in the breeding season. North Star 64H has a quality set of sons in this sale.
- His dam is one of my favourite young cows. She is clean fronted, has a tidy udder and calves first cycle every year. The top side of her pedigree reads Shoshone, while the bottom has two shots of OCC Homer and goes back to the foundation Melisa 545 cow.
- If you are looking to increase capacity and fleshing ability in your cow herd, buy this bull.
- This bull could be registered in the American Angus Association, but not in the CAA

“Edie Creek sells mature two year old bulls. They come ready to breed and do a great job covering cows while maintaining their condition and remaining sound, while covering a lot of ground. We have loved every bull we’ve purchased from Edie Creek.

They do not disappoint. We look forward to dealing with Edie Creek in the future as they have a great business model. They are always willing to take the time to answer questions, they are always professional and easy to work with. Their bulls are quiet. They have good sound feet, they cover cows, and get the job done.”

Andy & Terry Keen - Manitou, MB



Edie Creek Melisa 3J

LOT	5	EDIE CREEK NORTH STAR 18M	
		TATTOO: ECA 18M	DOB: April 30 2024
BORN 1ST CYCLE?	YES	EDIE CREEK GREAT ONE 77F EDIE CREEK NORTH STAR 64H O C C DIXIE ERICA 606S	EDIE CREEK GREAT ONE 79Y CH GEORGINA 626 O C C GREAT PLAINS 943G O C C DIXIE ERICA 612H COLE CREEK FULL BORE 730 NCC JUANADA 2025 O C C HEADLINER 661H OSF O C C DIXIE ERICA 907C
CALVING EASE	2		
UDDER	4	NCC FULL BORE 629 EDIE CREEK DIXIE ERICA 14G	
FLESHING	4	O C C DIXIE ERICA 693N	
BW: 90		DAM BW: 72	DAM WT: 1240
		AOD: 5	1 ST CYCLE DAM: YES

- Great Cow Bull with a ton of longevity in his pedigree. The dam of this bull is a direct daughter of OCC Dixie Erica 693N—making her a maternal sister to our OCC Big time 848C herd bull that left us many solid females.
- Both sides of his pedigree go back to the Dixie Erica 1019 cow—she shows up 5x in Lot 5’s pedigree. She was a foundation cow for Ohlde Cattle Company, and lived to be 21 years old.
- Dixie Erica 606S raised her last calf here as a 17-year old cow, and always calved in the first cycle. Dixie Erica 693N also raised her last calf as a 17-year old cow.



OCC Dixie Erica 693N - Maternal Granddam of Lot 5

LOT	6	EDIE CREEK GATE KEEPER 140M	TATTOO: ECA 140M	DOB: May 19 2024	REG#: 2406272
BORN 1ST CYCLE?	YES	O C C BLUEPRINT 632B O C C GATE KEEPER 678G O C C DIXIE ERICA 638D	O C C MODERATOR 825M O C C DIXIE ERICA 628W O C C GREAT PLAINS 943G O C C DIXIE ERICA 721Y O C C SENTINEL 714S O C C DIXIE ERICA 859T CROWFOOT MACHO 4549P CROWFOOT KAWICH 1758L		
CALVING EASE	3				
UDDER	3.5	O C C WORTHY MAN 967W EDIE CREEK 967W ERICA 24D			
FLESHING	5	CROWFOOT VALLEY CJ ERICA 7723T			
BW:	86	DAM BW: 71	DAM WT: 1310	ADD: 8	1 ST CYCLE DAM: YES

- This is a changer bull. One of the heaviest muscled, easy-fleshing bulls in the sale.
- A bull like this can help your cow herd do more with less. If you want to reduce frame score and increase fleshing ability this is a great candidate.
- Fairly straight OCC pedigree. Bottom side goes back to the Erica 7723T cow who is the dam of our Big Time 53F herd bull. She raised her last calf as a 15-year old cow.



OCC Worthy Man 967W - Maternal Grand sire of Lot 6

LOT	7	EDIE CREEK GATE KEEPER 125M	TATTOO: ECA 125M	DOB: May 16, 2024	
BORN 1ST CYCLE?	YES	OCC BLUEPRINT 632B OCC GATE KEEPER 678G OCC DIXIE ERICA 638D	OCC MODERATOR 825M OCC DIXIE ERICA 628W OCC GREAT PLAINS 943G OCC DIXIE ERICA 721Y LODE OF WYE MH MINA 836 HILLFIRE LEGACY 518R NEW FORCE 51N		
CALVING EASE	4				
UDDER	5	MH TUBBY 56 EDIE CREEK 56 ERICA 126D			
FLESHING	4.5	EDIE CREEK 518R 51N ERICA 1Y			
BW:	76	DAM BW: 78	DAM WT: 1150	ADD: 8	1 ST CYCLE DAM: NO

- Easy-calving Gate Keeper son. His maternal brother was the lot 1 bull in the 2025 sale.
- Mh Tubby daughters are known for extra capacity and fleshing ability while staying feminine and fertile. We are currently using two bulls that are sired by a full brother to Tubby—MH Tank 54—so you will see a lot more of this influence in our herd moving forward.
- For some reason Canadian Angus has not been able to get the DNA to match his dam, so he is not registered, but his pedigree in this catalog is accurate. We are submitting a new DNA sample and hope to get this resolved.



Lodge of Wye - Sire of MH Tubby 56

LOT	8	EDIE CREEK GATE KEEPER 63M	TATTOO: ECA 63M	DOB: May 07 2024 (TWIN)	REG#: 2405669
BORN 1ST CYCLE?	YES	O C C BLUEPRINT 632B O C C GATE KEEPER 678G O C C DIXIE ERICA 638D	O C C MODERATOR 825M O C C DIXIE ERICA 628W O C C GREAT PLAINS 943G O C C DIXIE ERICA 721Y O C C GREAT PLAINS 943G MH MELISA 357 EDIE CREEK ZORRO 24Z EDIE CREEK 839L BETSY 3X		
CALVING EASE	4.5				
UDDER	5	MH TITAN 752 EDIE CREEK BETSY 52F			
FLESHING	5	EDIE CREEK BETSY 106C			
BW:	58	DAM BW: 64	DAM WT: 1150	ADD: 6	1 ST CYCLE DAM: YES

- A quality bull out of one of Jaxon's cows. If you want to increase the efficiency in a set of cows, this bull can do that.
- Betsy 52F has calved first cycle every year and is an incredible producer. Her calves grow fast to weaning and she must have high cream content. Her daughter has the great lot 18 bull in this sale. 52F also comes from the same cow family as the Lot 1 bull in the sale.
- This bull is masculine and has shown early maturity. He has been a heat-seeker for a long time and I expect him to be an aggressive breeder.



Edie Creek Betsy 52F - Dam of Lot 8



“Reliable cow families and linebreeding: consistency by design.”

Stefan Bouw

LOT 9		EDIE CREEK GATE KEEPER 145M	
		TATT00: ECA 145M	DOB: May 20 2024
		REG#: 2407807	
BORN 1ST CYCLE?	YES	O C C BLUEPRINT 632B O C C GATE KEEPER 678G O C C DIXIE ERICA 638D	O C C MODERATOR 825M O C C DIXIE ERICA 628W O C C GREAT PLAINS 943G O C C DIXIE ERICA 721Y O C C JUNEAU 807J KROUPALS ELBA 187 O C C MISSING LINK 830M LENLOOK FLORA 26J
CALVING EASE	3		
UDDER	5	KROUPAL JUNEAU 797 EDIE CREEK FLORA 50B	
FLESHING	4	EDIE CRaEEK ML830M FLORA 4Y	
BW: 75		DAM BW: 76	DAM WT: 1495
		AOD: 10	1 ST CYCLE DAM: YES

- Nice long, masculine bull. OCC Gate Keeper 678G is a bull you can walk up to and scratch.
- Flora 50B is one of the biggest cows we have in terms of frame size and will turn 12 years old this year. She is also an Elite dam. The Flora cow family always carries a little more frame size.
- As you read through this catalog, notice the consistency in cow families.

LOT 10		RED EDIE CREEK NEBULA 38M	
		TATT00: ECA 38M	DOB: May 03 2024
		REG#: 2407747	
BORN 1ST CYCLE?	YES	RED CALVO NEBULA 67C RED EDIE CREEK NEBULA 13K RED EDIE CREEK PRINCESS 75F	RED BECKTON NEBULA P P707 OSF RED CALVO ROSE 8Z RED OCC EASY RED 868A RED EDIE CREEK PRINCESS 120C RED REDHILL P707 NEBULA 153Z RED OCC VANESSA 604C RED OCC EASY RED 868A RED RIDGE SIDE MRS BC HOBO 13A
CALVING EASE	4		
UDDER	3.5	RED OCC GUNTHER 624G RED EDIE CREEK LUCY 126K	
FLESHING	5	RED EDIE CREEK LUCY 14D	
BW: 80		DAM BW: 72	DAM WT: 875
		AOD: 2	1 ST CYCLE DAM: YES

- Lot 10 is a STUDD. He has a big crest and extra fleshing ability and has shown it since a calf in the red group.
- We unfortunately lost his sire as a 2-year old due to injury. Take a solid look at these Nebula 13K sons.
- His mother has a tidy udder and has calved first cycle every year in her young career.

LOT 11		RED EDIE CREEK NEBULA 29M	
		TATT00: ECA 29M	DOB: May 01 2024
		REG#: 2407738	
BORN 1ST CYCLE?	YES	RED CALVO NEBULA 67C RED EDIE CREEK NEBULA 13K RED EDIE CREEK PRINCESS 75F	RED BECKTON NEBULA P P707 OSF RED CALVO ROSE 8Z RED OCC EASY RED 868A RED EDIE CREEK PRINCESS 120C RED OCC EASY RED 868A EDIE CREEK DUCHESS 109C RED CALVO NEBULA 67C RED EDIE CREEK VALENTINE 112D
CALVING EASE	5		
UDDER	4	RED EDIE CREEK EASY RIDE 2G RED EDIE CREEK VALENTINE 135J	
FLESHING	4.5	RED EDIE CREEK VALENTINE 58G	
BW: 68		DAM BW: 65	DAM WT: 1040
		AOD: 3	1 ST CYCLE DAM: YES

- Very low birth weight Heifer Bull. He brings light BW from both his dam and sire side of the equation.
- Something that not a lot of folks talk about is the ability for a calf to get up and nurse quickly. It's a very important trait to those of us who calve out on grass and don't want to touch any calves. My notes from the day this bull was born—"Great pair. Sucking fast"
- His dam has calved first cycle every year.



BULL RATINGS EXPLAINED

CALVING EASE: Based on the bull's birthweight, his parents' birthweight, and his own EPD's. Also based on the assumption that the bull will be breeding small- framed Angus/British cattle- -if the bull will be breeding larger-framed Continental cattle, a score of "3" bull could work on heifers. These are simply guidelines to help your decision making. You are ultimately responsible for the matings of your own cattle.

UDDER RATING: Based on the combination of what the sire and dam bring to the equation. The quality of the dam's udder structure- teat shape and size, and what the sire's genetic potential brings. Rated between "1"- "5", a score of "3" would be an average, functional udder, while a score of "5" would be a perfectly level udder with small, shapely teats.

FLESHING RATING: Our fleshing ability score is rated on a 1-5 scale, with 5 being the easiest fleshing cattle that maintain condition with minimal input and 1 being the hardest fleshing. This score reflects how efficiently a bull and his progeny convert feed into body condition, particularly under practical, real-world management.

CALVING EASE RATING: Here's what the numbers tell you:

1. Suitable for breeding cows only - 100 lb+ Birth weights possible
2. Suitable for breeding smaller cows-90 lb+ Birth weights possible
3. Suitable for breeding cows and larger-framed, mature heifers - 85 lb BW's
4. Suitable for breeding heifers & cows too
5. HEIFER BULL, easy deliveries with vigorous calves at birth!

BORN 1ST CYCLE: This indicates if a bull was born in the first 21 days of the calving season. This includes bulls that were born early from short gestation.

AOD: Age of Dam. Actual age of the bull's dam when she raised him.

DAM WT: Actual weight of Bulls dam when she raised him.

1ST CYCLE DAM: This indicates if the dam of the sale bull was born in the first 21 days the year she was born. Fertility drives profitability.





95% OF THE BULLS IN THIS SALE WERE BORN IN THE FIRST CYCLE!

Keeping replacement heifers out of Terminal (growth) bulls that have never been selected for cowherd FERTILITY will steal your chance at optimizing profit—Profitability falls by the way-side when chasing maximum production levels.

LOT	12 RED EDIE CREEK DUCHESS 109M				
	TATTOO: ECA 109M DOB: May 14 2024 REG#: 2407790				
BORN 1ST CYCLE?	YES	RED CALVO NEBULA 67C RED EDIE CREEK NEBULA 13K RED EDIE CREEK PRINCESS 75F	RED BECKTON NEBULA P P707 OSF RED CALVO ROSE 8Z RED OCC EASY RED 868A RED EDIE CREEK PRINCESS 120C RED REDHILL P707 NEBULA 153Z RED OCC VANESSA 604C RED EDIE CRK NORSEMAN KING 91T CROWFOOT DUCHESS 3129N		
CALVING EASE	5				
UDDER	4	RED OCC GUNTHER 624G RED EDIE CREEK DUCHESS 83K EDIE CREEK DUCHESS 109C			
FLESHING	3.5				
BW: 65		DAM BW: 60	DAM WT: 865	ADD: 2	1 ST CYCLE DAM: YES

- Another extremely safe Heifer Bull.
- This is a smaller bull that should be able to breed heifers for many years before ever outgrowing the job.
- Maternal Grand dam Duchess 109C raised a solid calf for us this year as a 10-year old and has calved first cycle every year.



Red Edie Creek Easy Ride 2G - Full Brother to The Dam of Lot 13

LOT	13 RED EDIE CREEK EASY RED 127M				
	TATTOO: ECA 127M DOB: May 17 2024 REG#: 2407795				
BORN 1ST CYCLE?	YES	RED OCC EASY RED 868A RED EDIE CREEK EASY RED 19F RED EDIE CREEK LADY 45B	RED OCC EASY RED AMF CAF NHF OSF MAF RED OCC VANESSA 797Y RED CROWFOOT MOONSHINE 8081U RED CROWFOOT LADY 6503S RED OCC EASY RED AMF CAF NHF OSF MAF RED OCC VANESSA 797Y RED EDIE CRK NORSEMAN KING 91T CROWFOOT DUCHESS 3129N		
CALVING EASE	2				
UDDER	4	RED OCC EASY RED 868A RED EDIE CREEK DUCHESS 136E EDIE CREEK DUCHESS 109C			
FLESHING	4.5				
BW: 92		DAM BW: 68	DAM WT: 1360	ADD: 7	1 ST CYCLE DAM: NO

- Solid built Cow Bull.
- The support photo is Edie Creek Easy 2G—2G is a full brother to the dam of lot 13. One day I hope to get some semen out of the tank to bring more of ECA 2G into our herd.
- The dam of this bull has calved first cycle every year except once.



LOT	14 RED EDIE CREEK GUNTHER 75M				
	TATTOO: ECA 75M DOB: May 09 2024 REG#: 2407773				
BORN 1ST CYCLE?	YES	RED REDHILL P707 NEBULA 153Z RED OCC GUNTHER 624G RED OCC VANESSA 604C	RED BECKTON NEBULA P P707 OSF RED BUF CRK REDPRIDE P154 OSF RED OCC RED GRAZER 610Z OSF MAF RED OCC VANESSA 829S OSF RED OCC RED GRAZER 610Z OSF MAF RED BUF CRK AMY W086 RED BANDURA DETOUR 59Y CROWFOOT BIEBIRD 3080N		
CALVING EASE	2				
UDDER	3.5	RED CALVO RED GRAZER 8E RED EDIE CREEK BIEBIRD 103H RED EDIE CREEK BIEBIRD			
FLESHING	3.5				
BW: 83		DAM BW: 86	DAM WT: 1210	ADD: 4	1 ST CYCLE DAM: YES

- Cow Bull. sired by our OCC Gunther 624G herd bull. 624G adds spine length and has left us some solid uddered young cows.
- The dam of this bull has calved first cycle every year, and has a bit of a larger personal bubble than most of our cows. She is never dangerous, just doesn't want to be close to us.

LOT	15 RED EDIE CREEK GUNTHER 131M				
	TATTOO: ECA 131M DOB: May 17 2024 REG#: 2407798				
BORN 1ST CYCLE?	YES	RED REDHILL P707 NEBULA 153Z RED OCC GUNTHER 624G RED OCC VANESSA 604C	RED BECKTON NEBULA P P707 OSF RED BUF CRK REDPRIDE P154 OSF RED OCC RED GRAZER 610Z OSF MAF RED OCC VANESSA 829S OSF RED OCC EASY RED 868A EDIE CREEK DUCHESS 109C RED CALVO NEBULA 67C RED EDIE CREEK PRINCESS 119E		
CALVING EASE	5				
UDDER	4.5	RED EDIE CREEK EASY RIDE 2G RED EDIE CREEK PRINCESS 112J RED EDIE CREEK PRINCESS 78G			
FLESHING	4				
BW: 70		DAM BW: 61	DAM WT: 910	ADD: 3	1 ST CYCLE DAM: YES

- Heifer Bull. If you like calves that come easy, this bull will do the trick!
- His dam is another cow that has calved first cycle every year in her young career.



16



DDA Emblazon 27C - Sire of Lot 16 and 17



Edie Creek Juanada 50H - Dam of lot 17

LOT 16 EDIE CREEK EMBLAZON 51M
 TATTOO: ECA 51M DOB: May 06 2024 REG#: 2399918

BORN 1ST CYCLE?	YES	O C C EMBLAZON 854E DDA EMBLAZON 27C D D A MELISA 824	D H D TRAVELER 6807 DIXIE ERICA OF C H 1019 SHOSHONE 130-6357 D D A MELISA 545 EDIE CREEK GREAT ONE 79Y CH GEORGINA 626 O C C WORTHY MAN 967W LENLOOK FLORA 26J
CALVING EASE	1		
UDDER	5	EDIE CREEK GREAT ONE 77F EDIE CREEK 38J FLORA 55J	
FLESHING	5	EDIE CREEK 38J FLORA 75Z	

BW: 100	DAM BW: 86	DAM WT: 1385	AOD: 3	1 ST CYCLE DAM: YES
---------	------------	--------------	--------	--------------------------------

- This bull is jam-packed with red meat! He has to be the heaviest bull we have weighed off pasture coming in at 1300 lbs as an 18 month old. He is physically impressive in every way.
- DDA Emblazon 27C is well known to be one of the best udder improvers. We are keeping a paternal brother to this bull.
- The dam of this bull is a 3/4 sister to the great Flora 1B cow that has the lot 49 bull in the sale, go take a look at her picture. We strongly believe in cow families. The Flora cow family is extremely consistent in their type and kind. They are a great asset to our breeding program.

LOT 17 EDIE CREEK EMBLAZON 21M
 TATTOO: ECA 21M DOB: May 01 2024 REG#: 2399912

BORN 1ST CYCLE?	YES	O C C EMBLAZON 854E DDA EMBLAZON 27C D D A MELISA 824	D H D TRAVELER 6807 DIXIE ERICA OF C H 1019 SHOSHONE 130-6357 D D A MELISA 545 O C C BIG TIME 746Z O C C DIXIE ERICA 693N MH TITAN 75Z EDIE CREEK JUANADA 737L 62Y
CALVING EASE	3.5		
UDDER	5	EDIE CREEK BIG TIME 848C EDIE CREEK JUANADA 50H	
FLESHING	3.5	EDIE CREEK JUANDA 62E	

BW: 77	DAM BW: 76	DAM WT: 1205	AOD: 4	1 ST CYCLE DAM: YES
--------	------------	--------------	--------	--------------------------------

- Another DDA Emblazon 27C son. This bull is more refined and I think is carrying more of his mothers influence than the lot 16 bull. He will improve udders.
- Juanada 50H has calved first cycle every year and is built right. Cows need to look like cows. Extension in their neck, fine boned and have an attractive long tail switch. Fertility improvements in your herd will show up when the cows look the part.
- The pedigree of this bull is loaded with proven cows. Our goal is to continue stacking proven, long lived cows in our pedigrees like you find in lot 17.

i

Optimization to Your Environment is a Key to Profitability

**19**

LOT	19		EDIE CREEK EQUINOX 69M	
	TATTOO: ECA 69M		DOB: May 09 2024 REG#: 2407771	
BORN 1ST CYCLE?	YES	LOYNING 7 EQUINOX 0009 EDIE CREEK EQUINOX 130K EDIE CREEK DIXIE ERICA 7C	LOYNING EQUINOX 7 LOYNING ESTER 7008 O C C HUNTER 928H O C C DIXIE ERICA 606S EDIE CREEK GREAT ONE 77F EDIE CREEK ELISEVA 96K EDIE CREEK ELISEVA 106E	LOYNING EQUINOX 7 LOYNING ESTER 7008 O C C HUNTER 928H O C C DIXIE ERICA 606S EDIE CREEK GREAT ONE 79Y CH GEORGINA 626 MH TITAN 752 EDIE CREEK ELISEVA 119T
CALVING EASE	4.5			
UDDER	4.5			
FLESHING	4.5			
BW: 70	DAM BW: 82	DAM WT: 915	AOD: 2	1 ST CYCLE DAM: YES

- Another solid Heifer Bull. The Equinox sire line has some added body length. We are happy with what we are seeing from Equinox 130K. He is clean made, structurally sound, and backed by cow families known for fertility and durability.
- Maternal Grand dam Eliseva 106E is a very attractive MH Titan 752 Daughter.
- This bull is triple bred to OCC Great Plains. Stacking Great Plains through sires like MH Titan 752 and Edie Creek North Star 64H just works.

LOT	20		EDIE CREEK EQUINOX 115M	
	TATTOO: ECA 115M		DOB: May 15 2024 REG#: 2406206	
BORN 1ST CYCLE?	YES	LOYNING 7 EQUINOX 0009 EDIE CREEK EQUINOX 21K EDIE CREEK DIXIE ERICA 71B	LOYNING EQUINOX 7 LOYNING ESTER 7008 EDIE CREEK 839L 298 LEGACY 5Y CROWFOOT DIXIE ERICA 4895P O C C BIG TIME 746Z O C C DIXIE ERICA 693N COLE CREEK FULL BORE 730 MH FRANCES 720	LOYNING EQUINOX 7 LOYNING ESTER 7008 EDIE CREEK 839L 298 LEGACY 5Y CROWFOOT DIXIE ERICA 4895P O C C BIG TIME 746Z O C C DIXIE ERICA 693N COLE CREEK FULL BORE 730 MH FRANCES 720
CALVING EASE	2			
UDDER	4.5	EDIE CREEK BIG TIME 848C EDIE CREEK FRANCES 126H MH FRANCES 614		
FLESHING	4.5			
BW: 86	DAM BW: 79	DAM WT: 1355	AOD: 4	1 ST CYCLE DAM: YES

- This Cow Bull will add some pounds to a calf crop. We see extra growth almost every time we have Cole Creek Full Bore 730 in the pedigree.
- Frances 126H is an easy-fleshing, wedge shaped cow that has calved first cycle every year. MH Frances 720 was one of Monte Howrey's favourite cows.
- All but 3 of the bulls in this sale were born in the first cycle. Every time a cow misses a cycle it costs around 42 lbs at weaning time. That's based on a 2 lb/day gain for a 21 day period. Having a tight calving window is extremely important! Typically we are 90% done calving in the first 30 days.

LOT	18		EDIE CREEK EQUINOX 137M	
	TATTOO: ECA 137M		DOB: May 18 2024 REG#: 2407802	
BORN 1ST CYCLE?	YES	LOYNING 7 EQUINOX 0009 EDIE CREEK EQUINOX 130K EDIE CREEK DIXIE ERICA 7C	LOYNING EQUINOX 7 LOYNING ESTER 7008 O C C HUNTER 928H O C C DIXIE ERICA 606S EDIE CREEK GREAT ONE 77F EDIE CREEK BETSY 33K EDIE CREEK BETSY 52F	LOYNING EQUINOX 7 LOYNING ESTER 7008 O C C HUNTER 928H O C C DIXIE ERICA 606S EDIE CREEK GREAT ONE 79Y CH GEORGINA 626 MH TITAN 752 EDIE CREEK BETSY 106C
CALVING EASE	5			
UDDER	5			
FLESHING	4.5			
BW: 67	DAM BW: 68	DAM WT: 925	AOD: 2	1 ST CYCLE DAM: YES

- Sleep all night Heifer Bull out of another one of Jaxon's cows. Lot 18 is built very smooth and long with good slope from hooks to pins. Your heifers will thank you for buying this bull!
- The sire goes back to Shoshone breeding on the top side through the Equinox bull. His dam is double bred to OCC Great Plains and OCC Legacy.
- Maternal Grand dam to this bull has the solid Lot 8 bull in the sale.
- Lots 18 and 19 are 7/8 brothers—buy them both to create a solid, uniform set of cows.



MH Titan 752 - Maternal Gransire for Lots 17, 18 and 19



Edie Creek Eliseva 106E - Maternal Granddam of lot 19

LOT	21		EDIE CREEK EQUINOX 114M	
	TATTOO: ECA 114M		DOB: May 14 2024 REG#: 2406279	
BORN 1ST CYCLE?	YES	LOYNING 7 EQUINOX 0009 EDIE CREEK EQUINOX 21K EDIE CREEK DIXIE ERICA 71B	LOYNING EQUINOX 7 LOYNING ESTER 7008 EDIE CREEK 839L 298 LEGACY 5Y CROWFOOT DIXIE ERICA 4895P COLE CREEK FULL BORE 730 NCC JUANADA 2025 O C C WORTHY MAN 967W LENLOOK FLORA 26J	LOYNING EQUINOX 7 LOYNING ESTER 7008 EDIE CREEK 839L 298 LEGACY 5Y CROWFOOT DIXIE ERICA 4895P COLE CREEK FULL BORE 730 NCC JUANADA 2025 O C C WORTHY MAN 967W LENLOOK FLORA 26J
CALVING EASE	3.5			
UDDER	4	NCC FULL BORE 629 EDIE CREEK FLORA 91H EDIE CREEK 38J FLORA 75Z		
FLESHING	4			
BW: 78	DAM BW: -	DAM WT: 1385	AOD: 4	1 ST CYCLE DAM: YES

- If you like our program but want to have 1300-1400 lb cows instead of our average of 1250 lbs, this bull is for you. Lot 21 is not too big at all in my mind, but don't buy him to downsize frame score.
- When you see NCC Full Bore 629 in a pedigree you can know that the cow is probably a frame score taller than our average cow.
- Flora 91H is one of three maternal sisters that have bulls in this sale. The other two have the Lot 16 & Lot 49 bulls. Take a look at the videos and support photos for all three and decide for yourself if you like what you see.



DID YOU KNOW?

- Reproduction is the most important factor affecting profitability.
- Reproduction is 5X more important than growth rate, and 10X more important than carcass quality when it comes to profit.
- Every missed breeding cycle represents a 42 lb loss in weaning weight.
- Body Condition has the greatest impact on reproduction. ("Howrey Angus bulls will sire Easier Fleshing Cows that can hold Body Condition.").
- Thin cows are only half as productive as those in optimum condition.





Edie Creek Dixie Erica 1G - Maternal Grand Dam of Lot 22

LOT	22	EDIE CREEK GATE KEEPER 113M	TATTOO: ECA 113M	DOB: May 14 2024	REG#: 2405629
BORN 1ST CYCLE?	YES	O C C GATE KEEPER 678G EDIE CREEK GATE KEEPER 47K	O C C BLUEPRINT 632B O C C DIXIE ERICA 638D CAR CHINNOOK 786		
CALVING EASE	4	MH FRANCES 62ID	MH FRANCES 327 EDIE CREEK GREAT ONE 79Y		
UDDER	5	EDIE CREEK GREAT ONE 77F EDIE CREEK ERICA 115K	CH GEORGINA 626 MH TITAN 752		
FLESHING	5	EDIE CREEK ERICA 1G	O C C DIXIE ERICA 693N		
BW:	68	DAM BW: 78	DAM WT: 985	AOD: 2	1ST CYCLE DAM: YES

- Another calving ease bull that will deliver maternal value and function and look good doing it! He has a very strong maternal brother we just weaned in January.
- Breeding maternal focused genetics is not flashy—its about consistency in type and kind. This bull reflects our breeding program very well. I look forward to watching Dixie Erica 115K. Our Great One 77F daughters are proving to be a strong asset in our herd.
- Take a look at the picture of his maternal granddam. If that's what you want your cows to look like—your best chance to get there is to buy this type of bull. It's always helpful to have teenage cows in your pedigree like 17-year old Dixie Erica 693N.

LOT	23	EDIE CREEK GATE KEEPER 58M	TATTOO: ECA 58M	DOB: May 06 2024	REG#: 2406293
BORN 1ST CYCLE?	YES	O C C GATE KEEPER 678G EDIE CREEK GATE KEEPER 47K	O C C BLUEPRINT 632B O C C DIXIE ERICA 638D CAR CHINNOOK 786		
CALVING EASE	5	MH FRANCES 62ID	MH FRANCES 327 LOYNING EQUINOX 7		
UDDER	5	LOYNING 7 EQUINOX 0009 EDIE CREEK JUANADA 129K	LOYNING EQUINOX 7 LOYNING ESTER 7008		
FLESHING	5	EDIE CREEK JUANADA 11C	O C C WORTHY MAN 967W EDIE CREEK JUANADA 16Z		
BW:	67	DAM BW: 68	DAM WT: 1010	AOD: 2	1ST CYCLE DAM: YES

- A practical calving-ease option developed in real-world conditions. Moderate framed, long bodied and easy-fleshing, Lot 23 combines trouble-free calving with the kind of maternal value that pays over time.
- Lot 23 and Lot 24 are 3/4 brothers that are both 5 star calving ease. Buy them both and get yourself a large group of very even calves.
- We really like our Equinox daughters. They are calm and attentive at calving and look to be built well for the long haul.

LOT	24	EDIE CREEK GATE KEEPER 19M	TATTOO: ECA 19M	DOB: May 01 2024	REG#: 2407736
BORN 1ST CYCLE?	YES	O C C GATE KEEPER 678G EDIE CREEK GATE KEEPER 47K	O C C BLUEPRINT 632B O C C DIXIE ERICA 638D CAR CHINNOOK 786		
CALVING EASE	5	MH FRANCES 62ID	MH FRANCES 327 LOYNING EQUINOX 7		
UDDER	5	LOYNING 7 EQUINOX 0009 EDIE CREEK DIXIE ERICA 30K	LOYNING ESTER 7008 O C C MOONSHINE 740M		
FLESHING	4.5	EDIE CREEK DIXIE ERICA 16C	O C C DIXIE ERICA 606S		
BW:	75	DAM BW: 77	DAM WT: 1020	AOD: 2	1ST CYCLE DAM: YES

- Another solid heifer friendly option with a 75lb BW. We have used his sire for 3 years on our heifers.
- Lot 24 comes from a productive, long-lasting cow family known for raising calves year after year under low-input conditions. 3 generations of cows calving in the first cycle only. Fertility is bred in.
- Moderate in type, structurally sound, and efficient on forage, he is built to sire daughters that stay in the herd and pay their way. A solid choice for ranchers focused on building dependable, low-input cow herds.



Loyning Equinox 7 - Paternal Grand sire of Lot 23

"Too many people view milk as a maternal trait. I view it as 'anti-maternal!' 'Maternal' is fertility, maternal calving ease, good mothering instinct and survivability. The rancher who develops good cows adapted to a low-input environment, sized right with moderate milking ability and with good hybrid vigor will soon have a high percentage of his/her cows calving in the first 30 days of calving. This rancher can sell a few cows to the rancher who wants to buy replacements, use a terminal cross bull and sell all the calves." *Burke Teichert*



Edie Creek Great One 77F - maternal Grandsire of Lot 22, 25, 26 and 27



MH Frances 652 - Maternal Granddam of Lot 26

LOT	25		EDIE CREEK GATE KEEPER 37M	
	TATTOO: ECA 37M		DOB: May 02 2024 REG#: 2399917	
BORN 1ST CYCLE?	YES	O C C GATE KEEPER 678G EDIE CREEK GATE KEEPER 47K MH FRANCES 621D	O C C BLUEPRINT 632B O C C DIXIE ERICA 638D CAR CHINNOOK 786 MH FRANCES 327 EDIE CREEK GREAT ONE 79Y CH GEORGINA 626 MH TUBBY 56 EDIE CREEK CAROLINE 111B	
CALVING EASE	3.5			
UDDER	5	EDIE CREEK GREAT ONE 77F EDIE CREEK CAROLINE 171K		
FLESHING	4.5	EDIE CREEK CAROLINE 103E		
BW: 74		DAM BW: 80	DAM WT: 890	AOD: 2 1 ST CYCLE DAM: YES

- Edie Creek Gate Keeper 47K has a very solid set of sons in this sale. They are all built to thrive in forage-based systems where cattle are expected to work for a living.
- The Caroline cow family carries a bit more birthweight—that is the reason this bull is a 3.5 calving ease and not higher. They also carry some of the most prepotent high quality udder structure genetics we have.

LOT	26		EDIE CREEK BIG TIME 167M	
	TATTOO: ECA 167M		DOB: May 25 2024 REG#: 2407824	
BORN 1ST CYCLE?	YES	EDIE CREEK BIG TIME 848C EDIE CREEK BIG TIME 53F CROWFOOT VALLEY CJ ERICA 7723T	O C C BIG TIME 746Z O C C DIXIE ERICA 693N CROWFOOT MACHO 4549P CROWFOOT KAWICH 1758L EDIE CREEK GREAT ONE 79Y CH GEORGINA 626 OCTORARO BALLOT STO 6 MH FRANCES 2126	
CALVING EASE	5			
UDDER	5	EDIE CREEK GREAT ONE 77F EDIE CREEK FRANCES 107J		
FLESHING	4	MH FRANCES 652		
BW: 73		DAM BW: 70	DAM WT: 720	AOD: 3 1 ST CYCLE DAM: YES

- Heifer Bull that comes from a cow family that is smaller framed than our average. They breed back and have solid calves every year—a profitable type.
- The cow weights in this catalog are the weight the cow was the year they raised the bull. So the dam of this bull weighed 980 lbs as a 3-year old. The weights are taken at preg check time in the fall.
- Take a look at his support photo—one of our best Big Time 53F daughters is a full sister to this bull in blood—she raised an exciting bull calf this past year.

LOT	27		EDIE CREEK BIG TIME 36M	
	TATTOO: ECA 36M		DOB: May 02 2024 REG#: 2407746	
BORN 1ST CYCLE?	YES	EDIE CREEK BIG TIME 848C EDIE CREEK BIG TIME 53F CROWFOOT VALLEY CJ ERICA 7723T	O C C BIG TIME 746Z O C C DIXIE ERICA 693N CROWFOOT MACHO 4549P CROWFOOT KAWICH 1758L EDIE CREEK GREAT ONE 79Y CH GEORGINA 626 O C C GREAT PLAINS 943G O C C JUANADA 737L	
CALVING EASE	5			
UDDER	4.5	EDIE CREEK GREAT ONE 77F EDIE CREEK JUANADA 77J		
FLESHING	3.5	EDIE CREEK JUANADA 737L 62Y		
BW: 70		DAM BW: 62	DAM WT: 1010	AOD: 3 1 ST CYCLE DAM: YES

- Heifer Bull built for low-stress calving in real-world conditions.
- This bull is built to travel and breed a bunch of females. Our bulls are developed slowly with a focus on their longevity—often times you can buy a bull where he looks the best he ever will the day you buy him. Our bulls will improve with age, and come into their own at around 4-5 years old.
- What a jam-packed pedigree. 693N, 7723T, 62Y—tremendous set of cows to have up close in your pedigree to improve fertility and longevity!

LOT	28		EDIE CREEK BIG TIME 142M	
	TATTOO: ECA 142M		DOB: May 19 2024 REG#: 2407805	
BORN 1ST CYCLE?	YES	EDIE CREEK BIG TIME 848C EDIE CREEK BIG TIME 53F CROWFOOT VALLEY CJ ERICA 7723T	O C C BIG TIME 746Z O C C DIXIE ERICA 693N CROWFOOT MACHO 4549P CROWFOOT KAWICH 1758L O C C GREAT PLAINS 943G MH MELISA 357 O C C MISSING LINK 830M EDIE CREEK CAROLINE 10M	
CALVING EASE	2			
UDDER	5	MH TITAN 752 EDIE CREEK CAROLINE 13E		
FLESHING	4	EDIE CREEK CAROLINE 61Z		
BW: 88		DAM BW: 83	DAM WT: 1380	AOD: 7 1 ST CYCLE DAM: YES

- Cow Bull. A bit of a slower maturing bull in the sale. Don't let that deter you from the traits that he brings to improve a set of cows.
- Another bull from the Caroline cow family. His dam will be 9 years old this year, and you would never guess it—she looks like a 5-year old. (Age of dam in the catalog represents the age the cow was when they raised the sale bull).
- MH Titan 752 bred cows until he was 13 years old. His daughters plain work and stick around. Physically Titan was not the type that would have impressed and topped a sale as a 2-year old. This bull reminds me of that type.

“Edie Creek bulls aren’t extreme in growth or popular traits, they focus on producing bulls that in turn produce a functional cow that will raise a live calf year after year. Bulls that go out and cover cows efficiently. Daughters of their bulls are easy fleshing, moderate framed, solid udders, adequate milk with great mothering ability. Stefan is an honest, passionate cattleman, with a goal for his cowherd, customer satisfaction is always a top priority.” *Josh Plett, Townview Farms - Blumenort, Manitoba*



Edie Creek Equinox 130K - Maternal Brother to Lot 29 & has Sons in this Sale



MH Mina 029 - Full Sister to the dam of Lot 30

LOT	29 EDIE CREEK TITAN 173M		
	TATT00: ECA 173M	DOB: May 28 2024	REG#: 2405661
BORN 1ST CYCLE?	NO	MH TITAN 752 EDIE CREEK TITAN 62G EDIE CREEK BETSY 106C	O C C GREAT PLAINS 943G MH MELISA 357 EDIE CREEK ZORRO 24Z EDIE CREEK 839L BETSY 3X O C C FOCUS 813F O C C DIXIE ERICA 960E O C C GREAT PLAINS 943G O C C DIXIE ERICA 612H
CALVING EASE	4.5		
UDDER	4.5	O C C HUNTER 928H EDIE CREEK DIXIE ERICA 7C O C C DIXIE ERICA 606S	
FLESHING	4		
BW:	82	DAM BW: 76	DAM WT: 1340
		ADD: 9	1 ST CYCLE DAM: YES

- An attractive, athletic Heifer Bull.
- Titan 62G was always one of the earliest bulls to shed off each year—a sign of solid hormonal balance.
- See the support photo—ECA 130K is a maternal brother to Lot 29 and has sons in this sale.
- The dam of this bull is 11yrs old this year and is a direct daughter of Dixie Erica 606S - our most fertile cow ever. Dixie Erica 7C is extra protective when she calves. Not mean, but gets upset when I take her calf to weigh and tag. Then settles back down when she gets it back.

LOT	30 EDIE CREEK TITAN 169M		
	TATT00: ECA 169M	DOB: May 27 2024	REG#: 2406307
BORN 1ST CYCLE?	NO	MH TITAN 752 EDIE CREEK TITAN 62G EDIE CREEK BETSY 106C	O C C GREAT PLAINS 943G MH MELISA 357 EDIE CREEK ZORRO 24Z EDIE CREEK 839L BETSY 3X O C C GREAT PLAINS 943G MH MELISA 357 SHOSHONE FERRALL 6340 M H MINA 836
CALVING EASE	2		
UDDER	4	MH TITAN 752 EDIE CREEK MINA 43G	
FLESHING	3.5	MH MINA 609	
BW:	86	DAM BW: 87	DAM WT: 1220
		ADD: 5	1 ST CYCLE DAM: YES

- Cow Bull from the Mina cow family. This bull will sire some clean fronted, refined cows. Take a look at the picture of MH Mina 029—The full sister to his dam.
- Mina 836 was one of Monte Howrey's foundation Females. She was a 3.5 frame cow that would weigh 1400 lbs at the right time of year. 836 combined exceptional easy-fleshing ability while staying very fertile and productive, which is an anomaly in nature.
- Dam has calved first cycle 4 out of 5 years.

LOT	31 EDIE CREEK TITAN 160M		
	TATT00: ECA 160M	DOB: May 23 2024	REG#: 2407819
BORN 1ST CYCLE?	YES	MH TITAN 752 EDIE CREEK TITAN 62G EDIE CREEK BETSY 106C	O C C GREAT PLAINS 943G MH MELISA 357 EDIE CREEK ZORRO 24Z EDIE CREEK 839L BETSY 3X O C C BIG TIME 746Z O C C DIXIE ERICA 693N MH TUBBY 56 EDIE CREEK DIXIE ERICA 71B
CALVING EASE	3.5		
UDDER	4	EDIE CREEK BIG TIME 848C EDIE CREEK DIXIE ERICA 157H EDIE CREEK DIXIE ERICA 74D	
FLESHING	3.5		
BW:	79	DAM BW: 78	DAM WT: 1290
		ADD: 4	1 ST CYCLE DAM: YES

- Here is the last of the Titan 62G sons in the sale. MH Titan 752 set the bar here for foot quality, longevity and functionality. He had better feet as a 13-year old than most 3-year-old bulls you will see.
- Buy these rugged 2-year-old bulls and be confident they are suited for large pastures and rougher terrain. Compared to buying yearling bulls you will need fewer bulls and have more reliable conception rates.

LOT	32 EDIE CREEK ABESLY 208M		
	TATT00: ECA 208M	DOB: Jun 17, 2024	
BORN 1ST CYCLE?	NO	DOUBLE BAR D ABESLY 308B EDIE CREEK ABESLY	
CALVING EASE	2.5		
UDDER	4	SHOSHONE FRANZ 419 MH MINA 639 MH MINA 392	SHOSHONE PIVOT 6159 MH FRANCES 64 SHOSHONE BALLARD 628GFAR MH MINA 68
FLESHING	4.5		
BW:	82	DAM BW: 65	DAM WT: 1320
		ADD: 8	1 ST CYCLE DAM: YES

- This is the only crossbred bull in the sale. His sire was 50% Fleckvieh and 50% Angus—making this bull 75% Angus and 25% Fleckvieh.
- This bull is smaller than average for frame size, but I expect you to see much more pop and growth in his calf crop than you might expect.
- Our hybrid bulls are always really appreciated by our customers. We will have more of them in our sale in 2027!

LOT	33 RED EDIE CREEK EASY RED 149M		
	TATT00: ECA 149M	DOB: May 21 2024	REG#: 2407808
BORN 1ST CYCLE?	YES	RED OCC EASY RED 868A RED EDIE CREEK EASY RED 19F RED EDIE CREEK LADY 45B	RED OCC EASY RED MAF RED OCC VANESSA 797Y RED CROWFOOT MOONSHINE 8081U RED CROWFOOT LADY 6503S RED 5L NORSEMAN KING 2291 CROWFOOT ENCHANTRESS 4091P RED LODI PRINCE 2632 OSF MAF RED VVV TRESS 38N
CALVING EASE	4		
UDDER	4	RED EDIE CRK NORSEMAN KING 91T RED EDIE CREEK PRINCETRES 110B RED EDIE CREEK PRINCETRESS 38S	
FLESHING	4		
BW:	78	DAM BW: 72	DAM WT: 1165
		ADD: 10	1 ST CYCLE DAM: NO

- Lot 33 came very close to staying out of the sale and staying here to breed cows for us. He might not be the biggest bull in the pen, but he will sire very efficient daughters that will make great cows!
- His dam has calved first cycle 10 out of 10 times! She is easy-fleshing with a solid udder. Wish we had many more like her.
- The sire of this bull—Easy Red 19F—we owned in partnership with Gemstone Cattle Co. They said Easy Red 19F had the best feet of any red bull they have had. The sons and daughters have worked well for them in their environment.



32

LOT 34 RED EDIE CREEK EASY RED 34M
 TATTOO: ECA 34M DOB: May 02 2024 REG#: 2407745

BORN 1ST CYCLE?	YES	RED OCC EASY RED 868A RED EDIE CREEK EASY RED 19F	RED OCC EASY RED RED OCC VANESSA 797Y RED CROWFOOT MOONSHINE 8081U RED CROWFOOT LADY 6503S RED BECKTON NEBULA P P707
CALVING EASE	2.5	RED EDIE CREEK LADY 45B	RED CALVO NEBULA 67C
UDDER	3.5	RED EDIE CREEK LUCY 24G	RED CALVO ROSE 8Z RED EDIE CRK NORSEMAN KING 91T RED RIDGE SIDE LUCY 13R
FLESHING	4.5	RED EDIE CREEK LUCY 54C	

BW: 85 | DAM BW: 76 | DAM WT: 1500 | AOD: 5 | 1ST CYCLE DAM: YES

- Big strong, masculine Cow Bull.
- The dam of this bull is larger framed, and comes from the fertile Lucy cow family.



OCC Easy Red 868A - Sire of Edie Creek Easy Red 19F



LOT 36 RED EDIE CREEK EASY RED 88M
 TATTOO: ECA 88M DOB: May 12 2024 REG#: 2407782

BORN 1ST CYCLE?	YES	RED OCC EASY RED 868A RED EDIE CREEK EASY RED 19F	RED OCC EASY RED RED OCC VANESSA 797Y RED CROWFOOT MOONSHINE 8081U RED CROWFOOT LADY 6503S
CALVING EASE	4	RED EDIE CREEK LADY 45B	RED OCC RED GRAZER 8E RED BUF CRK AMY W086
UDDER	4	RED EDIE CREEK ROSE 21H	RED OCC EASY RED 868A RED EDIE CREEK ROSE 121C
FLESHING	3.5	RED EDIE CREEK ROSE 8E	

BW: 79 | DAM BW: 78 | DAM WT: 1190 | AOD: 4 | 1ST CYCLE DAM: YES

- Heifer Bull.
- This bull is out of Mikaya's cow. 21H has calved first cycle every year just like her dam, who has the lot 35 bull in this sale. Fertility pays.
- Lot 36 is double bred to Easy Red 868A.



Edie Creek Dixie Erica 21E - Dam of Lot 37

LOT 35 RED EDIE CREEK EASY RED 130M
 TATTOO: ECA 130M DOB: May 17 2024 REG#: 2407797

BORN 1ST CYCLE?	YES	RED OCC EASY RED 868A RED EDIE CREEK EASY RED 19F	RED OCC EASY RED RED OCC VANESSA 797Y RED CROWFOOT MOONSHINE 8081U RED CROWFOOT LADY 6503S
CALVING EASE	4	RED EDIE CREEK LADY 45B	RED OCC EASY RED
UDDER	3	RED OCC EASY RED 868A RED EDIE CREEK ROSE 8E	RED OCC VANESSA 797Y RED EDIE CRK NORSEMAN KING 91T RED RIDGE SIDE ROSE 2S
FLESHING	4	RED EDIE CREEK ROSE 121C	

BW: 78 | DAM BW: 67 | DAM WT: 1260 | AOD: 7 | 1ST CYCLE DAM: YES

- Heifer Bull. Double bred to OCC Easy Red 868A. Easy Red was a game changer for our Red Angus herd. He brought down frame size, increased rib capacity, had terrific foot quality and left wedge, feminine daughters.
- Rose 8E has calved first cycle every year and so has a young daughter—who has the Lot 36 bull in this sale.

LOT 37 EDIE CREEK EASY RED 153M
 TATTOO: ECA 153M DOB: May 23 2024 REG#: 2407810

BORN 1ST CYCLE?	YES	RED OCC EASY RED 868A RED EDIE CREEK EASY RED 19F	RED OCC EASY RED RED OCC VANESSA 797Y RED CROWFOOT MOONSHINE 8081U RED CROWFOOT LADY 6503S
CALVING EASE	4	RED EDIE CREEK LADY 45B	O C C HUNTER 928H O C C DIXIE ERICA 960E
UDDER	4	EDIE CREEK DIXIE ERICA 21E	O C C GREAT PLAINS 943G O C C DIXIE ERICA 612H
FLESHING	4.5	O C C DIXIE ERICA 606S	

BW: 81 | DAM BW: 68 | DAM WT: 1335 | AOD: 7 | 1ST CYCLE DAM: YES

- Black/Red Carrier Bull out of one of our best black cows. Dixie Erica 21E is sleek, feminine and a direct daughter of the Dixie Erica 606S cow that you will see throughout the pedigrees in this catalog.
- We are breeding some of our best black cows to red bulls in an attempt to deepen the quality of our Red Angus cow herd.
- This bull lines up a pile of proven, low-input cattle. His maternal sister is one of the prettiest heifer calves from the 2025 crop. He has multiple maternal brothers that have sold through this sale.



OCC Hunter 928H - Sire of Edie Creek Dixie Erica 21E

REGISTER TO BID ONLINE STEP-BY-STEP GUIDE

Preferred browser: Google Chrome 

1 CREATE YOUR ACCOUNT
 Click "Create Account" in the top right hand corner.



2 FILL IN YOUR INFORMATION
 Fill in your First Name, Last Name, Username, Password and Email address to complete the form, then hit "create account" at the bottom of the page. Alternatively sign in using your Facebook or Google account.



3 APPROVE YOUR EMAIL
 Check your email for an email from "Team Auction Sales" to approve your account. Make sure to check your junk folder if you don't see it in your Inbox.



4 CONFIRM YOUR EMAIL ADDRESS
 Click on "confirm your email address" to activate your account.



5 GET APPROVED TO BID
 Go to the auction you want to register for and click "Get approved to bid".



6 FILL IN YOUR BILLING INFORMATION
 Fill out the billing information and click "confirm your information" at the bottom. You will then be registered for all upcoming auctions. You can edit your billing information any time by clicking on "bidder account" in the menu bar.



Need Assistance?

Please call our dedicated tech support line at 1-866-313-0123 if you need assistance at any time creating your account or using our new website.

LOT 38 EDIE CREEK NEBULA 61M
 TATT00: ECA 61M DOB: May 07 2024 REG#: 2406248

BORN 1ST CYCLE?	YES	RED CALVO NEBULA 67C RED EDIE CREEK NEBULA 13K RED EDIE CREEK PRINCESS 75F	RED BECKTON NEBULA P P707 RED CALVO ROSE 8Z RED OCC EASY RED 868A RED EDIE CREEK PRINCESS 120C O C C BIG TIME 746Z O C C DIXIE ERICA 693N O C C WORTHY MAN 967W CROWFOOT VALLEY CJ ERICA 7723T
CALVING EASE	3.5		
UDDER	4	EDIE CREEK BIG TIME 848C EDIE CREEK 967W ERICA 12G EDIE CREEK 967W ERICA 24D	
FLESHING	5		
BW: 82		DAM BW: 68	DAM WT: 1230
		ADD: 5	1 ST CYCLE DAM: YES

- Black/Red Carrier Bull.
- If you want to add some natural muscle and fleshing ability into a set of calves this guy can do it!
- Often times folks think you need to have a lot of air under an animal for them to weigh up, but this guy was the second heaviest off grass and you won't notice him for his frame size!

LOT 39 EDIE CREEK EASY 24M
 TATT00: ECA 24M DOB: May 01 2024 REG#: 2399913

BORN 1ST CYCLE?	YES	RED OCC EASY RED 868A RED EDIE CREEK EASY RED 19F RED EDIE CREEK LADY 45B	RED OCC EASY RED RED OCC VANESSA 797Y RED CROWFOOT MOONSHINE 8081U RED CROWFOOT LADY 6503S SINCLAIR SUN DIAL 4TL2 SINCLAIR LADY IDA 4XX50 70C7 O C C WORTHY MAN 967W CROWFOOT VALLEY CJ ERICA 7723T
CALVING EASE	5		
UDDER	3.5	SINCLAIR SQUIRT 6TT10 EDIE CREEK ERICA 56H EDIE CREEK 967W ERICA 24D	
FLESHING	4		
BW: 66		DAM BW: 70	DAM WT: 1170
		ADD: 4	1 ST CYCLE DAM: YES

- Black/ Red Carrier Bull.
- Sleep all night Heifer Bull with some Sinclair breeding on his mothers side.
- This is the last bull off of the Easy Red 19F herd sire. 19F sustained an injury that ended his natural breeding carrier.
- This bull picks his head up early when we walk in the pen, not the best option if you only have a few head of cattle. I don't think you will notice it if he is in a group of bulls or others. But make note he isn't the quietest-natured bull in the sale.

LOT 40 EDIE CREEK GATE KEEPER 79M
 TATTOO: ECA 79M DOB: May 10, 2024 REG#: 2424339

BORN 1ST CYCLE?	YES	O C C GATE KEEPER 678G EDIE CREEK GATE KEEPER 37K	O C C BLUEPRINT 632B O C C DIXIE ERICA 638D SHOSHONE SOLOMON 316 OSF
CALVING EASE	4	MH FRANCES 661	MH FRANCES 014 COLE CREEK CEDAR RIDGE 1V
UDDER	5	MH MH DIXIE ERICA 621	MH FRANCES 720
FLESHING	5	MH DIXIE ERICA 763	O C C GREAT PLAINS 943G MH DIXIE ERICA 439

BW: 76	DAM BW: 65	DAM WT: 1205	AOD: 8	1 ST CYCLE DAM: YES
--------	------------	--------------	--------	--------------------------------

- This guy converts forage well and has a rock-solid set of genetics. Lot 40 is low to the ground and athletic and is ready to cover big country.
- We flushed the dam of Gate Keeper 37K. Frances 661 has a perfect udder and brings shoshone influence into the pedigree. This bull is triple bred to OCC Great Plains.
- He is not registered.



MH Admiral 34 - Maternal Grand sire of Lot 40



LOT 41 EDIE CREEK NORTH STAR 99M
 TATTOO: ECA 99M DOB: May 13 2024 REG#: 2406628

BORN 1ST CYCLE?	YES	EDIE CREEK GREAT ONE 77F EDIE CREEK NORTH STAR 64H	EDIE CREEK GREAT ONE 79Y CH GEORGINA 626
CALVING EASE	4.5	O C C DIXIE ERICA 606S	O C C GREAT PLAINS 943G O C C DIXIE ERICA 612H
UDDER	4.5	EDIE CREEK BIG TIME 848C EDIE CREEK DIXIE ERICA 13G	O C C BIG TIME 746Z O C C DIXIE ERICA 693N
FLESHING	5	EDIE CREEK DIXIE ERICA 71B	EDIE CREEK 839L 298 LEGACY 5Y CROWFOOT DIXIE ERICA 4895P

BW: 71	DAM BW: 68	DAM WT: 1200	AOD: 5	1 ST CYCLE DAM: YES
--------	------------	--------------	--------	--------------------------------

- Smooth made and moderate in his build, he combines easy-calving genetics with maternal strength and long-term functionality.
- Daughters of this bull will be fabulous cows. This is the third year in a row that Dixie Erica 13G has a bull in the sale. She did the impossible—calved second cycle as a heifer with twins, then moved up to first cycle calving and has stayed there ever since.

LOT 42 EDIE CREEK NORTH STAR 86M
 TATTOO: ECA 86M DOB: May 11 2024 REG#: 2406246

BORN 1ST CYCLE?	YES	EDIE CREEK GREAT ONE 77F EDIE CREEK NORTH STAR 64H	EDIE CREEK GREAT ONE 79Y CH GEORGINA 626
CALVING EASE	4	O C C DIXIE ERICA 606S	O C C GREAT PLAINS 943G O C C DIXIE ERICA 612H
UDDER	4.5	EDIE CREEK EMBLAZON 87Y EDIE CREEK ERICA 99C	O C C EMBLAZON 854E O C C REVOLUTION ROSE 743K
FLESHING	5	CROWFOOT VALLEY CJ ERICA 7723T	CROWFOOT MACHO 4549P CROWFOOT KAWICH 1758L

BW: 81	DAM BW: 75	DAM WT: 1210	AOD: 9	1 ST CYCLE DAM: NO
--------	------------	--------------	--------	-------------------------------

- Another really solid North Star 64H son. We have used a maternal brother to this bull. And the Big Time 53F Herd sire is out of this bull's maternal Grand dam who raised her last calf as a 15-year old cow.
- OCC Emblazon 854E in this bull's pedigree is brining extra natural fleshing ability. This bull will sire cost efficient females that are deep bodied and moderate.
- More alert bull—will raise his head early when approached. Not the quietest option for small herds, but should fit in well in a larger group.

LOT	43	EDIE CREEK NORTH STAR 96M	TATTOO: ECA 96M	DOB: May 13 2024	REG#: 2407786
BORN 1ST CYCLE?	YES	EDIE CREEK GREAT ONE 77F EDIE CREEK NORTH STAR 64H O C C DIXIE ERICA 606S	EDIE CREEK GREAT ONE 79Y CH GEORGINA 626 O C C GREAT PLAINS 943G O C C DIXIE ERICA 612H COLE CREEK FULL BORE 730 O C C DIXIE ERICA 606S MH TUBBY 56 EDIE CREEK CAROLINE 111B		
CALVING EASE	2				
UDDER	4.5	EDIE CREEK FULL BORE 34F EDIE CREEK CAROLINE 54J EDIE CREEK CAROLINE 103E			
FLESHING	4.5				
BW:	87	DAM BW:	86	DAM WT:	1120
				ADD:	3
					1 ST CYCLE DAM: YES

- Cow Bull. with a little more size and performance.
- Another bull from the Caroline cow family. The Caroline cows all have exceptional udder structure with small, tidy teats.
- This bull is double bred to Dixie Erica 606S close up in his pedigree.

LOT	45	EDIE CREEK NORTH STAR 12M	TATTOO: ECA 12M	DOB: April 28 2024 (TWIN)	
BORN 1ST CYCLE?	YES	EDIE CREEK GREAT ONE 77F EDIE CREEK NORTH STAR 64H O C C DIXIE ERICA 606S	EDIE CREEK GREAT ONE 79Y CH GEORGINA 626 O C C GREAT PLAINS 943G O C C DIXIE ERICA 612H COLE CREEK BLACK CEDAR COLE CREEK S G JUMBOLEEN 76P MH TUBBY 56 EDIE CREEK ELISEVA 119T		
CALVING EASE	3				
UDDER	4	COLE CREEK FULL BORE 730 EDIE CREEK ELISEVA 22J EDIE CREEK ELISEVA 123C			
FLESHING	4.5				
BW:	68	DAM BW:	78	DAM WT:	1190
				ADD:	3
					1 ST CYCLE DAM: YES

- Lot 45 and 44 are near identical, soggy twin brothers.
- Eliseva 22J has followed the pattern set for her by cows that came before her. She has more capacity than her maternal granddam, but other than that she is very similar.
- There was an error with the DNA testing, so Lot 45 is not currently registered, but he should be by sale day.

LOT	46	EDIE CREEK NORTH STAR 82M	TATTOO: ECA 82M	DOB: May 10 2024	REG#: 2406169
BORN 1ST CYCLE?	YES	EDIE CREEK GREAT ONE 77F EDIE CREEK NORTH STAR 64H O C C DIXIE ERICA 606S	EDIE CREEK GREAT ONE 79Y CH GEORGINA 626 O C C GREAT PLAINS 943G O C C DIXIE ERICA 612H COLE CREEK FULL BORE 730 NCC JUANADA 2025 O C C LEGACY 839L CROWFOOT DUCHESS 3129N		
CALVING EASE	2				
UDDER	4	NCC FULL BORE 629 EDIE CREEK DUCHESS 37H EDIE CREEK 839L DUCHESS 66W			
FLESHING	3.5				
BW:	90	DAM BW:	69	DAM WT:	1065
				ADD:	4
					1 ST CYCLE DAM: YES

- Cow Bull. born in the first cycle by a cow that's only ever calved in the first cycle.
- Duchess 66W raised 15 calves for us and calved in the first cycle 13 out of 15 years. She just retired in 2025.
- Reproduction is 5X more important than growth rate and 10X more important than carcass quality when it comes to profit!

LOT	44	EDIE CREEK NORTH STAR 11M	TATTOO: ECA 11M	DOB: April 28 2024 (TWIN)	REG#: 2407735
BORN 1ST CYCLE?	YES	EDIE CREEK GREAT ONE 77F EDIE CREEK NORTH STAR 64H O C C DIXIE ERICA 606S	EDIE CREEK GREAT ONE 79Y CH GEORGINA 626 O C C GREAT PLAINS 943G O C C DIXIE ERICA 612H COLE CREEK BLACK CEDAR 46P COLE CREEK S G JUMBOLEEN 76P MH TUBBY 56 EDIE CREEK ELISEVA 119T		
CALVING EASE	3				
UDDER	4	COLE CREEK FULL BORE 730 EDIE CREEK ELISEVA 22J EDIE CREEK ELISEVA 123C			
FLESHING	4.5				
BW:	68	DAM BW:	78	DAM WT:	1190
				ADD:	3
					1 ST CYCLE DAM: YES

- Lot 44 and 45 are near identical, soggy twin brothers.
- Eliseva 22J has followed the pattern set for her by cows that came before her. She has more capacity than her maternal grandmother, but other than that she is very similar.



Edie Creek Eliseva 123C - Maternal Granddam of Lot 44 and 45



Edie Creek 839L Duchess 66W - Maternal Granddam of Lot 46

VIDEOS OF ALL THE SALE BULLS ARE AVAILABLE!

PLEASE HEAD TO OUR WEBSITE: www.EdieCreekAngus.com

FOR LINKS TO THE VIDEOS AND TEAM BIDDING INSTRUCTIONS:

For online bidding, please register to bid on TEAM Auctions (find instructions on page 23), or give us a call if you would like to be on the phone.

LOT 47		EDIE CREEK GREAT ONE 5M	
		TATTOO: ECA 5M	DOB: April 22 2024
BORN 1ST CYCLE?	YES	EDIE CREEK GREAT ONE 185F EDIE CREEK GREAT ONE 66J EDIE CREEK BEAUTY 92G	EDIE CREEK GREAT ONE 79Y CROWFOOT ERICA 1652L MH TITAN 752 1945581 MH BEAUTY 640
CALVING EASE	2.5		OC C HEADLINER 661H
UDDER	4	0 C C MISSING LINK 830M EDIE CREEK ML830M FLORA 4Y	0 C C DIXIE ERICA 946K N BAR EMULATION EXT
FLESHING	3	LENLOOK FLORA 26J	LENLOOK FLORA 30E
BW: -		DAM BW: 80	DAM WT: -
		ADD: 13	1 ST CYCLE DAM: YES

- Cow Bull. from the Flora cow family. Flora 4Y has an 11-year old daughter in the herd who has the Lot 9 bull in this sale. Flora 4Y raised 12 calves for us with sons topping our sale. We bought a maternal brother back from Vee Tee Angus.
- This bull is built a little more narrow and taller than I prefer.
- This bull is not registered.

LOT 48		EDIE CREEK GREAT ONE 8M	
		TATTOO: ECA 8M	DOB: April 25 2024
BORN 1ST CYCLE?	YES	EDIE CREEK GREAT ONE 185F EDIE CREEK GREAT ONE 66J EDIE CREEK BEAUTY 92G	EDIE CREEK GREAT ONE 79Y CROWFOOT ERICA 1652L MH TITAN 752 MH BEAUTY 640
CALVING EASE	3		CROWFOOT 6004S
UDDER	4	RED CROWFOOT MOONSHINE RED EDIE CREEK LADY 45B	RED CROWFOOT BRNDINA 6359S RED CROWFOOT RAMBLER 1038L
FLESHING	3	RED CROWFOOT LADY 6503S	RED CROWFOOT LADY 1131L
BW: 81		DAM BW: 87	DAM WT: 1520
		ADD: 10	1 ST CYCLE DAM: YES

- Black/Red Carrier. This bull is maternal brother to Easy Red 19F - One of the reference sires you will find at the beginning of this catalog.
- The ECA 66J sons have extra frame and grow. This bull is not registered.
- This bull is built a little more narrow and taller than I prefer - If you want some calves that can finish with a heavy carcass weight, he can do the trick. He picks his head up early when we walk in the pen, Lot 48 is not the quietest option in the sale.

LOT 49		EDIE CREEK GATE KEEPER 151M	
		TATTOO: ECA 151M	DOB: May 22 2024
		REG#: 2434045	
BORN 1ST CYCLE?	YES	0 C C BLUEPRINT 632B 0 C C GATE KEEPER 678G 0 C C DIXIE ERICA 638D	0 C C MODERATOR 825M 0 C C DIXIE ERICA 628W 0 C C GREAT PLAINS 943G
CALVING EASE	3		0 C C DIXIE ERICA 721Y
UDDER	5	EDIE CREEK GREAT ONE 79Y EDIE CREEK FLORA 1B	0 C C GREAT PLAINS 943G 0 C C JUANADA 737L
FLESHING	4	EDIE CREEK 38J FLORA 75Z	0 C C WORTHY MAN 967W LENLOOK FLORA 26J
BW: 82		DAM BW: 62	DAM WT: 1370
		ADD: 10	1 ST CYCLE DAM: YES

- Cow Bull. We sold a full brother to this bull last year, and many other maternal brothers have sold through this sale.
- Flora 1B has been the ideal cow. Early on most would have called her plain or slighter in build. She has been perfect. She has one of the best udders in the herd and has calved first cycle every year for 10 years. As I am writing this in January we just weaned the calves and she's got another solid bull calf that you will see in our 2027 sale!
- Optimization to your environment is a key to profitability. We let the environment dictate which cow families stick around. This bull represents our breeding program well and offers you a chance to advance your herds maternal traits.



Edie Creek Flora 1B - Dam of Lot 49

LOT 50		EDIE CREEK GATE KEEPER 71M	
		TATTOO: ECA 71M	DOB: May 09 2024
		REG#: 2407772	
BORN 1ST CYCLE?	YES	0 C C BLUEPRINT 632B 0 C C GATE KEEPER 678G 0 C C DIXIE ERICA 638D	0 C C MODERATOR 825M 0 C C DIXIE ERICA 628W 0 C C GREAT PLAINS 943G
CALVING EASE	3		0 C C DIXIE ERICA 721Y
UDDER	5	EDIE CREEK LEGACY 34C EDIE CREEK FLORA 17F	0 C C LEGACY 839L
FLESHING	4.5	EDIE CREEK FLORA 24C	0 C C JUANADA 633M DDA EMBLAZON 27C EDIE CREEK 38J FLORA 75Z
BW: 82		DAM BW: 65	DAM WT: 1130
		ADD: 6	1 ST CYCLE DAM: YES

- Cow Bull. Similar pedigree to the Lot 49 bull being out of another Flora Cow.
- These genetics are forage adapted. The whole pedigree reads the same. To achieve consistency, we stack low-input, proven cattle for generations.
- This bull could have been at the front of the catalog. Consistency in our breeding program allows us to be able to offer similar quality at the end of the sale as we do at the front of the sale.

LOT 51		EDIE CREEK GATE KEEPER 150M	
		TATTOO: ECA 150M	DOB: May 21 2024
		REG#: 2407809	
BORN 1ST CYCLE?	YES	0 C C BLUEPRINT 632B 0 C C GATE KEEPER 678G 0 C C DIXIE ERICA 638D	0 C C MODERATOR 825M 0 C C DIXIE ERICA 628W 0 C C GREAT PLAINS 943G
CALVING EASE	2.5		0 C C DIXIE ERICA 721Y
UDDER	4.5	0 C C BOUT TIME 806B EDIE CREEK JUANADA 2E	0 C C HOMER 650H 0 C C DIXIE ERICA 853Z
FLESHING	4	EDIE CREEK JUANADA 11C	0 C C WORTHY MAN 967W EDIE CREEK JUANADA 16Z
BW: 87		DAM BW: 69	DAM WT: 1300
		ADD: 7	1 ST CYCLE DAM: YES

- Cow Bull. Standing in the pen Lot 51 is very similar to the lot 9 bull in his type and kind. That being said, all of these Gate Keeper sons are very similar.
- The dam of this bull has calved in the first cycle 6 out of 7 years. Her sire OCC Bout Time was a bull we brought up from Ohlde's in Kansas.
- This pedigree is 100% Ohlde Cattle Co. OCC has been breeding the forage efficient kind for a very long time.



"At Edie Creek Angus, we are focused on Breeding Maternal Genetics that are proven to fit a low input environment and management practice based on maximizing profit per acre of grass."

LOT 52 EDIE CREEK GATE KEEPER 98M
TATTOO: ECA 98M DOB: May 13 2024 REG#: 2405666

BORN 1ST CYCLE?	YES	O C C BLUEPRINT 632B O C C GATE KEEPER 678G O C C DIXIE ERICA 638D	O C C MODERATOR 825M O C C DIXIE ERICA 628W O C C GREAT PLAINS 943G O C C DIXIE ERICA 721Y BALLOT OF BELLADRUM OCTORARO GAMMER 203 BASIN Q BAR 163 MH DIXIE ERICA 113
CALVING EASE	4.5		
UDDER	4	OCTORARO BALLOT STO 6 MH DIXIE ERICA 664 MH DIXIE ERICA 336	
FLESHING	3.5		
BW: 75		DAM BW: 71	DAM WT: 1205
		AOD: 8	1 ST CYCLE DAM: YES

- Heifer bull with a 75 lb BW.
- The dam of this bull has also calved in the first cycle 6 out of 7 years.
- Some neat old-school genetics in this pedigree with Ballot of Belladrum (Born in 1954) and Basin Q Bar 163 (Born in 1973).



55

LOT 55 EDIE CREEK GATE KEEPER 20M
TATTOO: ECA 20M DOB: May 1, 2024

BORN 1ST CYCLE?	YES	OCC GATE KEEPER 678G EDIE CREEK GATE KEEPER 47K MH FRANCIS 621D	OCC BLUEPRINT 632B OCC DIXIE ERICA 638D CAR CHINOOK 786 MH FRANCIS 327 LOYNING EQUINOX 7 LOYNING ESTER 7008 EDIE CREEK ZORRO 24Z MH MINA 68
CALVING EASE	4		
UDDER	4	LOYNING 7 EQUINOX 0009 EDIE CREEK BETSY 188K	
FLESHING	4.5		
BW: 71		DAM BW: 83	DAM WT: 1005
		AOD: 2	1 ST CYCLE DAM: NO

- Last Heifer Bull in the sale. Lot 55 has a small, tidy, Angus head.
- On a few calves every year DNA doesn't work out. However, I am quite sure his sire is Edie Creek Gate Keeper 47K. This bull is not registered.



Edie Creek Gate Keeper 47K - Herdsire for us and Also a Maternal brother to Lot 56

LOT 53 EDIE CREEK GATE KEEPER 126M
TATTOO: ECA 126M DOB: May 17 2024 REG#: 2406629

BORN 1ST CYCLE?	YES	O C C BLUEPRINT 632B O C C GATE KEEPER 678G O C C DIXIE ERICA 638D	O C C MODERATOR 825M O C C DIXIE ERICA 628W O C C GREAT PLAINS 943G O C C DIXIE ERICA 721Y EDIE CREEK GREAT ONE 79Y CH GEORGINA 626 MH TITAN 752 EDIE CREEK LADY ERICA 12X
CALVING EASE	2		
UDDER	5	EDIE CREEK GREAT ONE 77F EDIE CREEK LADY ERICA 65H EDIE CREEK LADY ERICA 134E	
FLESHING	3.5		
BW: 81		DAM BW: 86	DAM WT: 1280
		AOD: 4	1 ST CYCLE DAM: YES

- Cow Bull. Lot 53 is a slower maturing bull designed for longevity, durability, and lifetime productivity.
- He will do wonders for improving udder quality and longevity.
- We have a number of young cows that are Great One 77F x Titan—and it works!

LOT 54 EDIE CREEK GATE KEEPER 66M
TATTOO: ECA 66M DOB: May 08 2024 REG#: 2424339

BORN 1ST CYCLE?	YES	O C C GATE KEEPER 678G EDIE CREEK GATE KEEPER 47K MH FRANCIS 621D	O C C BLUEPRINT 632B O C C DIXIE ERICA 638D CAR CHINOOK 786 MH FRANCIS 327 O C C BLUEPRINT 632B O C C DIXIE ERICA 638D MH MH MELISA 357
CALVING EASE	4		
UDDER	5	O C C GATE KEEPER 678G EDIE CREEK MELISA 168K MH MELISA 509	
FLESHING	4		
BW: 65		DAM BW: 86	DAM WT: 875
		AOD: 2	1 ST CYCLE DAM: YES

- Heifer Bull. Double bred to OCC Gate Keeper 678G with a half-sib mating. His cow family comes from the same cow line as MH Titan 752.
- Linebred genetics reinforce uniformity, fertility, and functional maternal performance on forage.
- His maternal grand dam is still going and raised a real fancy heifer calf in 2025. We are using a maternal brother to the dam of this bull.



MH Melisa 357 - Dam of MH Titan 752 and also the Maternal Great Granddam of Lot 54

LOT 56 EDIE CREEK 39M
TATTOO: ECA 39M DOB: May 3, 2024

BORN 1ST CYCLE?	YES		
CALVING EASE	2		
UDDER	4	CAR CHINOOK 786 MH FRANCIS 621D MH FRANCIS 327	AAR REALLY WINDY 1205 CAR MISS MARIE 5109 COLE CREEK CEDAR RIDGE IV MH FRANCIS 720
FLESHING	4.5		
BW: 88		DAM BW: -	DAM WT: 1335
		AOD: 8	1 ST CYCLE DAM: YES

- Cow Bull backed by the well respected Shoshone Frances cow family.
- This strong bull is a maternal brother to the Edie Creek Gate Keeper 47K bull that has a terrific set of sons in this sale.
- This bull is not registered.



Silver Creek Livestock is Manitoba's newest livestock hauling experience. We are a family-owned business looking to make a positive impact on the livestock industry.

Call us to discuss how Silver Creek Livestock can help serve you and your business.

SILVER CREEK LIVESTOCK

CONTACT US | 204-380-4974
VALERIO@SILVERCREEKLIVESTOCK.COM



TERMS & CONDITIONS

BULL DEVELOPMENT: These bulls have been raised on their mothers' milk and grass. For their first winter, they grazed cover crops alongside their dams until the beginning of December, when they started corn grazing. They were weaned in mid-January 2025.

At that point, they were brought home and fed grass seed screenings along with some corn silage. Their hay rings contained either hay or greenfeed bales.

In May of 2024, they were turned out to pasture with no supplements, where they rotationally grazed until the end of October. At that time, we began providing silage bales.

These bulls are fed with the goal of developing them into **hard-muscled, athletic bulls — not chubby, soft, doughboys**. In mid-November 2025, they were fed sunflower screenings, pea screenings, some corn silage along with and a protein supplement. They also receive calcium and a complete mineral package, with hay or greenfeed silage bales available in their rings.

As you will see, these bulls have **not been pushed with hard feed**, ensuring they stay sound and are built to **breed longer for you**.

THE BULL PROGRAM: Bulls can be kept at **Edie Creek Angus at no feed charge until May 1st**. After that, the cost will be **\$3 per day**. We strongly recommend that you **purchase insurance** on bulls staying in our yard after the sale. **We are not responsible for any uninsured injuries** that occur before the bull is delivered.

TERMS AND CONDITIONS: The terms of sale are by cash or cheque. Settlement to be made immediately after the completion of the sale. The right of property will not pass until after settlement is made. Bulls will not be released until settlement is made.

BIDS: Every animal in the sale will be sold to the highest bidder and may be subject to a minimum/reserve bid.

DISPUTES: In case of disputes, bidding will be re-opened between the parties involved. If no further bid is made, the buyer will be the person from whom the auctioneer accepted the last bid. The auctioneer's decision on all disputes is final.

ANNOUNCEMENTS AND CHANGES: All announcements and changes made from the auction block will take precedence over the printed matter in this catalogue. Buyers are therefore cautioned to pay close attention to any such announcements.

PURCHASER'S RISK: Each animal becomes the risk of the purchaser as soon as the auctioneer's hammer falls for the final time.

LIABILITIES: All persons attending the sale do so at their own risk and sellers assume no liability, legal or otherwise, for any accidents occurring in or about the premises.

GUARANTEE: The Bulls have been evaluated for breeding soundness and semen quality by Beausejour Animal Hospital. We guarantee to provide you with a sound, fertile bull at the point of sale. Should your bull fail to be a satisfactory breeder in his first breeding season, he will be replaced with a bull of equal value or a credit will be given towards the purchase of another bull. We will not provide the replacement or credit for a bull that is physically injured or mismanaged. It is the responsibility of the buyer to insure their bulls if desired.

FREE DELIVERY IS AVAILABLE FOR CUSTOMERS IN MANITOBA: If you take your bull home on sale day, we will give you a **\$50 discount on each bull**.

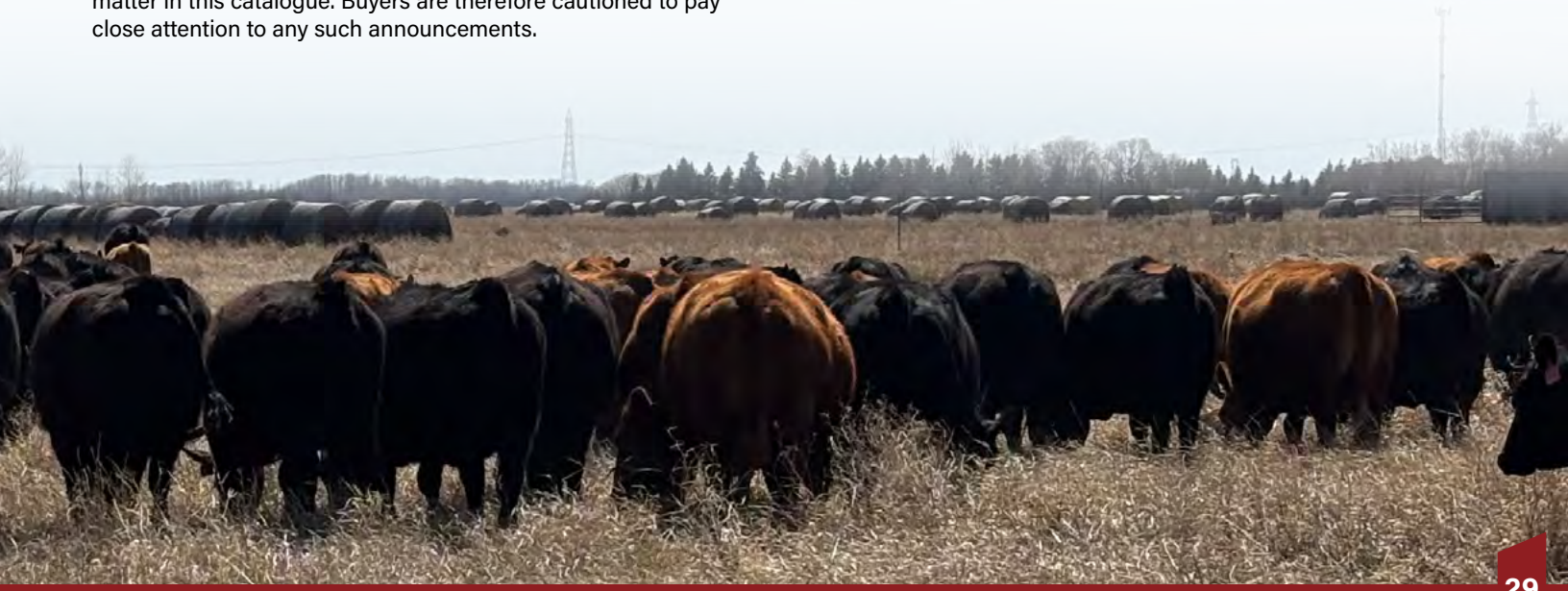
CANADIAN DELIVERIES: For our Canadian customers outside of Manitoba, bulls will be delivered as close as we can to your location for a cost of **\$250/head** with a cap of **\$750/customer**.

USA DELIVERIES: Bulls selling into the USA will be charged an additional **\$250 CAD per bull** to cover export health testing fees.

Delivery to customers in North Dakota will cost **\$300/bull CAD**. We will arrange a place to meet along the interstate.

We will assist with arrangements for the bulls to be shipped to wherever you are in the United States, at cost to the buyer. Give Stefan a call before the sale if possible so that we can make a plan that will work for you. Silver Creek Transport is the trucking company we have used in the past, and they have been terrific.

INSURANCE: The animal becomes the responsibility of the purchaser as soon as it is sold. Please purchase insurance on your bull, if that is a risk you would like to mitigate.

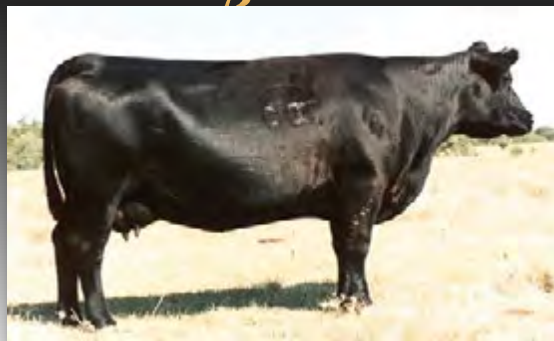


FOUNDATION GENETICS

at Edie Creek Angus



N Bar Emulation EXT • Sire of OCC Great Plains 943G



Dixie Erica of CH 1019 • Dam of OCC Great Plains 943G and Paternal Granddam of OCC Legacy 839L



OCC Great Plains 943G



OCC Dixie Erica 907C • Full Sister to Great Plains



MH Titan 752 • Son of OCC Great Plains 943G



OCC Dixie Erica 693N • Daughter of OCC Dixie Erica 907C

OCC Great Plains and OCC Dixie Erica 907C can be found in almost all the pedigrees of our cow herd. In the words of Tim Ohlde, "Great Plains excels his sire (N Bar Emulation EXT) in every EPD", from carcass merit to growth, and his daughters are structurally correct, highly fertile cows with great mothering instincts. Many breeders who focused on maternal quality used Emulation back on Traveler bred cattle with great success. Our goal was to maintain maternal aspects & longevity, which is why we pursued the Great Plains line - keeping with the Dixie Erica 1019 cow (dam of many great OCC bulls) which we could trust. MH Titan & ECA Great One 79Y were both excellent sons of OCC Great Plains. Donor Dam 693N is a great example of longevity, fertility & structural correctness. She is now 18, her dam 907C was 19 and great grand dam 1019 made it to 21!

"WE ARE STACKING PROVEN BLOODLINES THAT HAVE PRODUCED PROBLEM-FREE INTO THEIR TEENS TO PRIORITIZE FERTILITY AND LONGEVITY!"



OCC Echelon 857E • Sire of OCC Legacy 839L



OCC Legacy 839L



ECA 66W • Daughter of OCC Legacy 839L

ECA 64B • Daughter of OCC Legacy 839L



ECA 5Y • Son of OCC Legacy 839L

OCC Legacy 839L was truly the foundation of the Edie Creek Program. He was owned by Crowfoot Cattle Co, Hillfire Angus, and B.B.A.R., they bought him and collected semen on him. Legacy was a masculine, hormonally balanced, athletic breeding machine that duplicates his own type in his sons, and leaves broody, deep, easy fleshing cows. We were fortunate to walk several sons in our pastures, as well as use him in our A.I. program. Sire Echelon is a son of the great Dixie Erica of CH 1019 cow, the OCC matron of Emblazon, Focus, Great Plains and many foundational OCC sires. Having lived until age 21, she set the bar for longevity, productivity, and had one of the most refined udder structures of any Angus cow. You will also find the Dixie Erica of CH 1019 cow in our Red Angus cattle. The pedigree of our OCC Easy Red 868A bull has 1019 in it 9 times. We plan on turning back to OCC Legacy in the near future for our herd.



MATERNAL PERFORMANCE

Cows whose genetic background has focused on increasing size and gain every generation will not produce the most functionally efficient females in a forage-based system.

Having an efficient, moderate, maternally-oriented cowherd is an important basis for profitable beef production on grass, especially in a drought scenario when Nature is exerting extreme pressures. This beef-production "Factory" that excels in Maternal traits can be bred to any combination of maternal or terminal sires to produce the kind of calves desired... Maternal performance is measured by more than weights and EPD's:

HARDINESS & REPEATABILITY/CONSISTENCY: We stack proven cows in our pedigrees that have raised calves fault free into their teens. Linebreeding to these cows will bring predictability & uniformity.

FERTILE & FUNCTIONAL: 95% of this year's sale bulls were born in the first cycle. Their parents are succeeding under the selection pressure we apply through a short breeding season and the competition factor of multi-sire breeding groups.

PASTURE CALVING: Calving on pasture in May without night-checks or close supervision means that calving ease & maternal instincts need to be automatic in our herd.

SOUND & CORRECT: Breeding stock are selected only if they and their ancestors have excellent foot and udder structure.

HIGH STANDARDS: Our cows extensively graze throughout the winter and nurse their calves for 8-10 months before they are weaned. Our cow herd is a hard-working group of employees that are hired to improve soil health and benefit the ecosystem.

Again, 95% of the, 2024 calf-crop were born in the first 30 days of Calving season, and that is done with a cow herd that grazes until December on pasture with their calves at side.

"OPTIMIZING PROFIT WITH MATERNAL EFFICIENCY!"

EDIE CREEK



A N G U S

59018 Stoneridge Rd,
Anola, MB R5L 0H9



19TH ANNUAL

BULL SALE

Contact: Stefan Bouw, 204-232-1620

MARCH 14, 2026

Sale Time: 1 p.m. CST | 59018 Stoneridge Rd, Anola, Manitoba

SELLING 56 RUGGED 2-YEAR-OLD BULLS

41 Black Angus - 10 Red Angus - 4 Black/Red Carriers - 1 Fleckvieh X Angus