

# Double Heads CNC Side Drilling Machine SH-laser32

1. Panasonic Laser Sensor Identify the top hole, Then drilling 3 in 1 hole in side, Support Wooden tenon drill in 32mm or 64mm distance.

2. Two or Three work Station switch freely, Support small, middle and large board side drilling.

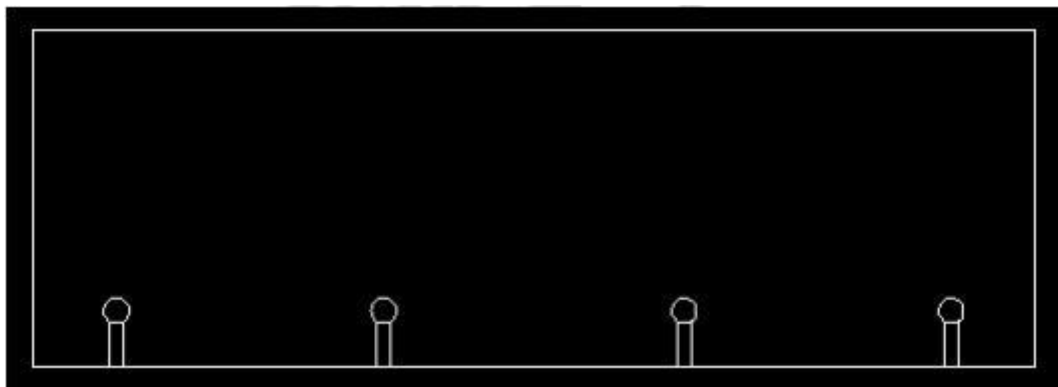
## Machine Specifications

Effective working area	2800mm
Body Structure	Heavy Duty Body Structure
Max Working Thickness	32mm
Transmission type	Ball Screw And Helical Rack
Motors and Drivers	Mege Servo Motor And Driver
Spindle power	2.2KW CHINA HQD Cooling Spindle X2
Spindle speed	18000RPM
Reducer	Included
Max Identify speed	24000mm/min
Max working speed	30000mm/min
Machining accuracy	<0.1mm
Inverter	Delixi Inverter
Control system	Mege System And Tough Screen
Lubrication system	Automatic
Voltage	380v 50hz 3phase
Frame	Frame thickness 6mm
Packings size	3.7x1.6x1.6m
Technical Support	Lifetime by phone, skype, video chat, video, in factory, email, and it is CNC purchasers choice of which communication type to use. Technical Documents, Manuals, Software, etc is ENGLISH spelling and format.

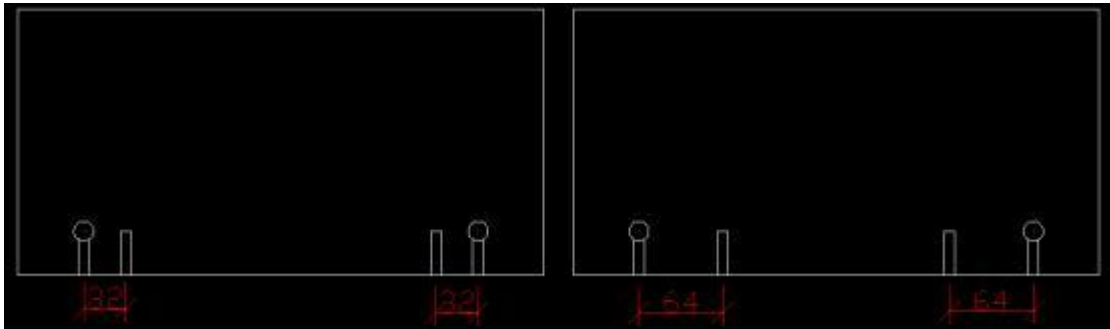




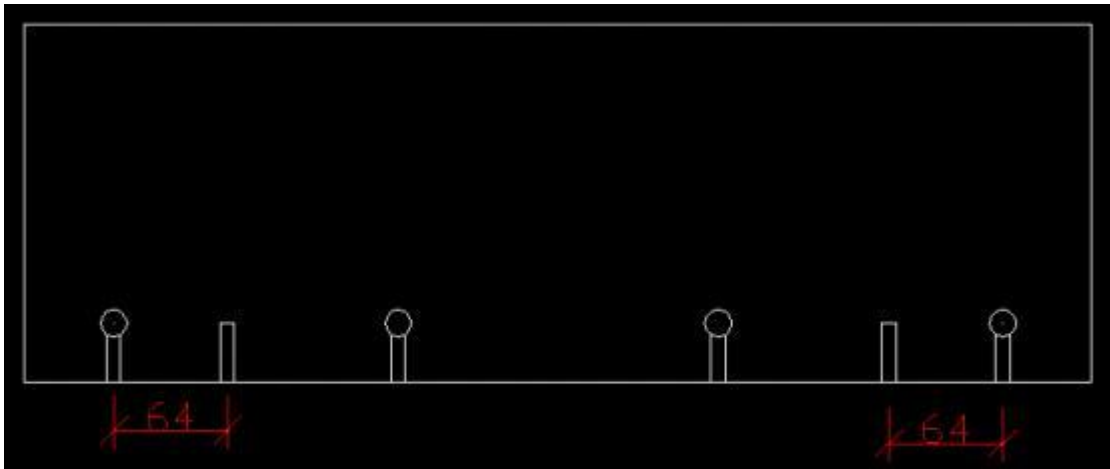
## Machine Work



**Three in one connector**



**Three in one connector and Wooden tenon**



**Three in one connector and Wooden tenon 2**