

ANDALEN LODGE



BIG GAME HUNTING TRIP

NORTHERN PATAGONIA, ARGENTINA



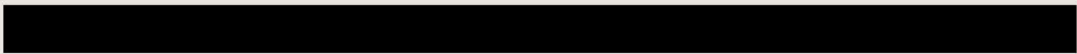
EMBRACE THE NORTHERN PATAGONIA HUNTING'S TRADITION WITH CATENA SAFARIS ARGENTINA

Our Andalen Lodge is located in the Northern Patagonia region of Argentina, combining the best landscapes, soft hills, woods, and sand-hills, our ranch becomes the perfect place for red giants spot and stalk, bow or rifle hunting.

PACKAGE: 5 DAYS HUNT FULL LODGING FOR 2 HUNTERS (DAILY RATES) + 2 BLACKBUCK + 2 PATAGONIC RAM PER HUNTER).

2

(2 TROPHIES



WHAT HAPPEN IF YOU DON'T FIND HUNTING PARTNERS?

If you don't find a hunting partner, don't worry, you can come alone or with the quantity of partners you find. Remember that you can't shoot all the animals, you have 1 trophy per hunter.

WHAT'S INCLUDED AND WHAT'S NOT?

INCLUDED:

- 5 days hunt full lodging for 2 hunters
- 2 BLACKBUCK
- 2 PATAGONIC RAM
- Professional guides 2x1 ratio
- Argentine world class cuisine, game meals
- Transportation from/to local airport
- Drinks, family wines, beverages
- Field prep. and transport. of the trophies to the broker in BA
- Land transportation and 4WD vehicles

NOT INCLUDED:

- Extra animals
- International Air Fair.
- Domestic flight from Buenos Aires to La Pampa
- Transfer service in Buenos Aires.
- Hunting License (\$340 / hunter).
- Government Tag (\$150 / trophy).
- Gun rental \$300 (per hunter).
- Caping/boiling USD 60 / Full body \$150.
- Insurance and medical expenses.
- Tips/ Recomendend: \$300 for the guide, \$300 for the staff

THE HUNT

Our preferred hunting method is typically spot and stalk, guided at a 2x1 ratio. Although we do have blinds available, the majority of the hunt will involve spot and stalk techniques. The hunting activities start from early morning and continue until dusk, ensuring ample time in the field. During the midday break, you'll have the opportunity to savor our talented chef's delicious meals and experience a traditional Argentine siesta to recharge before the afternoon hunt. As the day comes to a close, a satisfying dinner awaits, accompanied by refreshing drinks, engaging conversations, and laughter around our spacious fire pit.

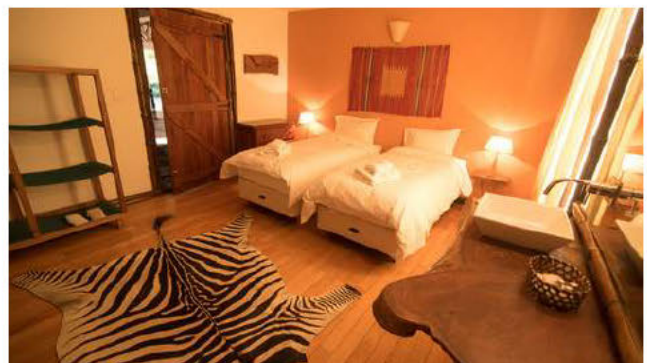
THE BEST BIG GAME ARGENTINA HUNTING DESTINATION



THE LODGE

Situated in the heart of La Pampa state, Catena's ranch offers an exceptional setting for this once-in-a-lifetime experience. Andalen lodge provides comfortable double-based rooms with private bathrooms, reliable warm water, electricity, and Wi-Fi connectivity. We take great pride in our gastronomy, as we are passionate food and wine lovers, ensuring you'll be treated to high- quality meals and beverages throughout your stay.

NORTHERN PATAGONIA



TWO DECADES OF EXPERIENCES



BOOKING

The package is valid for 24 months from the date of purchase, allowing flexibility in scheduling your hunt. Juan, sales manager of Catena Safaris Argentina will contact you to finalize the dates and proceed with the booking process. Our hunting season runs from March through July. 1 extra trophy per hunter is required at least.

LOGISTICS

Your journey begins at Buenos Aires International Airport (EZE), where you will arrive first. From there, you will take a domestic flight to Santa Rosa city, La Pampa Airport (RSA) one day before the experience begins. The flight duration from Buenos Aires International Airport to Santa Rosa is approximately one hour. Catena Travel Assistance will take care of and arrange domestic flights, transfers, hotels, and additional programs for you, ensuring a seamless travel experience. Our travel assistance department ensures that logistics in Argentina are tailored and meticulously planned from the moment you arrive until the time you depart.

FREQUENT QUESTIONS

Tavel requirements?

A valid passport to enter Argentina is required. No visa required. No vaccines required.

Destination airport name?

You will be flying to Buenos Aires international Aiport (EZE). Once there, our travel assistance team will take care of your logistics to get to the final destination.

Can I bring my own gun?

We don't recommend traveling with guns. High Import costs and long airport waiting times are going to make the trip uncomfortable...

Can I bring my own bow?

Feel free to do it, bow is considered as sporting equipment, no paperwork or special import licenses needed.

How is the weather and terrain like?

We have a big temperature amplitude during the season since it starts in March and We hunt until July. To be accurate, please check www.accuweather.com a week before the trip. Measure point is Santa Rosa, La Pampa, Argentina. Pampa's terrain is beautiful, soft hills some sand hills, open areas and woods.

Do you have a gear list?

Gear list and field recommendations: Hat, binoculars, light backpack, jacket, bugs repellent and sunscreen, comfortable hiking shoes. We use camp clothing, similar than Kuiu Verde, Sitka Optifade, etc. (Orange is not required)

CATENA SAFARIS ARGENTINA

Email Juan at **sales@catenasafarisargentina.com** for any concerns or suggestions.

+54 9 3471613555

