

OUR GUIDE TO NEW ZEALAND



WANGANUI SAFARIS
NEW ZEALAND

A person in dark clothing stands on a rocky, grassy ridge, looking out over a vast, deep fjord. The water is a pale blue-grey, and the surrounding mountains are steep and rugged. The sky is a clear, light blue. The overall scene is serene and majestic.

FROM THE NORTH TO
THE SOUTH
WE HAVE IT COVERED

STAY, SHOP & SEE
ALL THAT NEW ZEALAND
HAS TO OFFER

WELCOME

TAKE A JOURNEY

It's not often you find yourself in the far away land of New Zealand, so make it a trip to remember.

There are bountiful experiences to be had during your time here in Aotearoa and we strongly recommend that you combine your hunting experience with Wanganui Safaris with world class touring.

We have highlighted some of New Zealand's finest accommodation, cuisine, attractions and sight-seeing as you journey to our remote hunting locations.

NORTH ISLAND



SOUTH ISLAND

A stylized map of the South Island of New Zealand, rendered in dark green and black. The map is overlaid with several labels and markers. Labels include 'Marlborough', 'Kaikoura', 'Christchurch', 'Wanaka', 'Tahr/Chamois Hunting', 'Queenstown', and 'Milford Sound'. Each label is connected to a specific location on the map by a thin line. There are several orange circular markers on the map, and one white circular marker. The background is a dark, textured green.

Marlborough

Kaikoura

Milford
Sound

Christchurch

Wanaka

Tahr/Chamois Hunting

Queenstown

AUCKLAND

CITY OF SAILS



SAIL AWAY

Auckland is New Zealand's largest city and main transport hub. Make sure you stop and enjoy the shopping, dining and natural wonders Auckland has to offer.

TRAVEL TIP

We recommend 1-2 days in our nation's largest city to experience all that it has to offer.



STAY

WATERFRONT HILTON

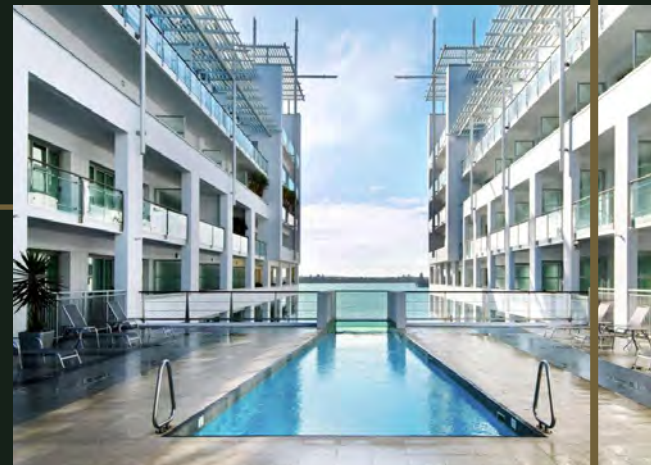
Unwind at Hilton Auckland hotel and admire stunning ocean views 300 meters out to sea. Positioned within Auckland's city center, the Hilton Auckland hotel is just a five minute walk from Auckland's central business district, as well as many impressive local attractions.

Only 30-45 minutes drive from the Auckland airport.



FEATURES

- Outdoor pool
- King suites with harbour view
- Fast Wi-Fi
- Fitness center
- Non-smoking rooms
- On-site restaurant
- Room service
- Laundry facilities
- On-site self and valet parking



WATERFRONT HILTON

www.hilton.com/en/hotels/aklhihi-hilton-auckland

OTHER

www.aucklandnz.com/accommodation



SEE & SHOP

VULCAN LANE

The area around Vulcan Lane, in the heart of Auckland's CBD, is a destination for designer shopping. Look for local legends like Zambesi, Workshop, Keith Matheson and Kate Sylvester then top up your wardrobe with unique New Zealand style.

BAY OF ISLANDS

The Bay of Islands is a subtropical microregion known for its stunning beauty and history. For those that love beaches and water activities, it's paradise. Explore one of the many nature walks, swim with dolphins, charter a boat to go fishing or to explore some of the 144 different islands scattered throughout the region.

AUCKLAND ATTRACTIONS

<https://www.aucklandnz.com/>

BAY OF ISLANDS

www.newzealand.com/bay-of-islands

WAIHEKE ISLAND

www.newzealand.com/nz/waiheke-island/



WAIHEKE ISLAND

Waiheke Island is the ultimate island retreat. You'll feel another world away, and yet Waiheke is just a 35-minute ferry ride from downtown Auckland. Known as the 'island of wine' for its many wineries and vineyards, a wine tasting or tour is a must. Enjoy a day trip or find accommodation and stay longer to really enjoy some of the fantastic activities on offer.





TRAVEL TIP

Drive south from Auckland, only three hours, to explore the central gem of the nation, the mighty Waikato. Explore the Waitomo Caves for the day before driving 2.5 hours to Rotorua for the night.

WAIKATO

NATURAL WONDERS



SCENIC LANDSCAPE

Situated in the heart of the North Island the diverse Hamilton & Waikato region encompasses New Zealand's fourth largest city, the country's longest river, Hobbiton Movie Set, and the world famous Waitomo Caves with its glowworms and adventure tourism activities.

TRAVEL TIP

Spend the day or just a few hours, there is plenty to do and experience.



EXPLORE

WAITOMO CAVES

Discover the ancient underground labyrinth and marvel at the limestone formations, then experience the wonder of a unique boat trip through the starry wonderland of the Glowworm Grotto.



WAITOMO CAVES

www.waitomo.com

AGRIDOME

www.agrodome.co.nz

TE PA TU

www.tamakimaorivillage.rezdy.com/index

HOBBITON TOURS

www.hobbitontours.com

ATTRACTIONS

www.rotoruanz.com

AGRIDOME

AgriDome offers an array of interesting and exciting activities to fill the day. From bungy jumping to the world renowned farm show, the AgriDome is an essential stop for any visitor to the area.

TE PA TU

New Zealand's Most Awarded Cultural Attraction! Te Pa Tu hares an evening feasts aligned to and changing with the maramataka (Miori lunar calendar).

Feast on Miori song, tradition, and divine seasonal kai (cuisine) within our forest Pa (village), towering Tawa trees, blazing bonfires, and forest-formed amphitheatre.

HOBBITON

You can explore the lush pastures of Hobbiton. There are guided walking tours that show where Lord of the Rings and The Hobbit Trilogies were based and filmed.





SEE & STAY

GEOTHERMAL & TE PUIA MUD SPRINGS

Rotorua is one of the world's most spectacular Geothermal Wonderlands. Geothermal activity, from the Greek language meaning Earth and thermal/heat, seethes from cracks in the streets, steams from backyard hot pools, bursts from geysers throughout the area, and bubbles from cauldron-like mud pools.

REDWOODS TREETWALK

Suspended high above the forest floor, encounter 75-metre-tall redwoods as you walk across eco-suspended bridges and platforms intricately designed to honour and accentuate the stunning natural environment.

TE PUIA MUD SPRINGS

www.tepuia.com

NOVOTEL ROTORUA

www.novotelrotorua.co.nz

REDWOODS TREETWALK

www.treewalk.co.nz

NOVOTEL ROTORUA

Novotel Rotorua Lakeside is situated near the shores of the lake, within metres of the CBD and ideally positioned to the restaurant sector. Many of our clients take advantage of the fantastic spa facilities nearby.



FEAUTES

- Indoor pool
- King suites with lake view
- Fast Wi-Fi
- Fitness center
- Non-smoking rooms
- On-site restaurant
- Laundry facilities
- On-site self parking



TRAVEL TIP

Drive South from Rotorua for one hour to uncover Huka Falls and the Great Lake Taupo.

LAKE TAUPO

OUR GREAT LAKE



TRANQUILITY

Lake Taupo is surrounded by beautiful forests, volcanic mountains and snowy peaks, making it a hub for events and activities year round. This beachy town offers an array of shopping, boat cruising, and good eats. We recommend grabbing a slice of pizza at the 2 Mile Bay Sailing Club at sunset.

TRAVEL TIP

Spend one or two days, this is a great place to relax by the water during a kiwi summer.



EXPLORE & STAY

NGATOROIRANGI MINE BAY MAORI ROCK CARVINGS

Take a kayak or boat tour around the scenic Western Bays of Lake Taupo to see the huge Maori rock carvings at Mine Bay.



HILTON LAKE TAUPO

Enjoy views over Lake Taupo and the surrounding volcanic scenery from this hotel. Their 19th-century building combines Victorian charm with modern styling, just 10 minutes from Taupo town center.

FEAUTURES

- Outdoor pool
- King suites with lake view
- Fast Wi-Fi
- Fitness center
- Non-smoking rooms
- On-site restaurant
- Tennis courts
- Laundry facilities
- Free on-site parking



ROCK CARVINGS

www.newzealand.com/int/feature/mine-bay-rock-carving

AJ HACKETT BUNGY & SWING

<https://www.bungy.co.nz/taupo>

HILTON LAKE TAUPO

www.hilton.com/en/hotels/akllthi-hilton-lake-taupo

AJ HACKETT TAUPO BUNGY & SWING

Turn up the heat with a Bungy or Swing in the heart of Aotearoa's geothermal region. Hanging off a cliff-top high over the Waikato River is Taupo Bungy and Swing.



HAWKES BAY

THE ART DECO



THE BEAUTIFUL BAY

After leaving Lake Taupo you will have the option to either head directly to Whanganui or pitstop in Hawkes Bay, New Zealand's sunny Art Deco capital.

SIP & EXPLORE

THE ART DECO

When a devastating earthquake destroyed Napier in 1931, the city was rebuilt in the style of the times - Art Deco. Relive the opulent era of jazz, boaters and beads. Napier's Art Deco is filled with great shopping and fantastic food.



TE MATA PEAK

Admire the incredible 360-degree views of Hawke's Bay from the summit of Te Mata Peak. Walk through the majestic hundred-year-old giant redwoods and discover the deep cultural relevance of this special place. You can also bike or drive to the top and marvel at the views and the hang gliders soaring high above the majestic Heretaunga Plains.



Craggy Range Winery

Enjoy a glass of New Zealand's finest wine at this breathtaking winery. Craggy Range is situated in the shadow of Te Mata Peak. This winery doubles as an upscale restaurant, and hosts travelers in their garden cottages and luxury lodges.

THE ART DECO

www.newzealand.com/us/napier

TE MATA PEAK

www.tematapark.co.nz

Craggy Range

www.craggyrange.com







WHANGANUI

YOUR HUNTING DESTINATION

THE LUXURY FOREST

The beautiful Whanganui River Valley is your first hunting destination. Staying at the first class Wanganui Safaris Lodge with stunning panoramic views of the surrounding area.

EXPLORE

BRIDGE TO NOWHERE

The Bridge to Nowhere gets more use now than it did when it was first built in 1936. It is the unofficial flagship of Whanganui National Park and a major visitor attraction on the Whanganui journey – one of New Zealand's Great Walks.

The journey lasts 4-4.5 hours, offering a genuine insight into the valley and settlement that was built for servicemen returning from the great war.



GREAT WALKS OF NEW ZEALAND

All of the 10 Great Walks provide unparalleled access to some of the country's most incredible natural landscapes, wildlife and cultural heritage. They traverse national parks and other culturally significant protected areas which are home to some of New Zealand's most endangered taonga (treasures).

HIKE MOUNT TONGARIRO

Mount Tongariro is a compound volcano located in the Taupo Volcanic Zone. The park will reward you with unparalleled beauty which will delight hikers as well as nature enthusiasts on the hunt for sites to remember for a lifetime. This is one of the Great Walks of New Zealand.

WHANGANUI INFO

www.newzealand.com/int/whanganui

MOUNT TONGARIRO

www.tongarirocrossing.org.nz

GREAT WALKS OF NEW ZEALAND

www.newzealand.com/us/feature/great-walks-of-new-zealand



TRAVEL TIP

From Taupo, drive three hours south to Wanganui Safaris for your five day stag hunt.

Whilst there, non-hunters may wish to visit The Bridge to Nowhere.





MARTINBOROUGH
THE WINE VILLAGE

DISCOVER THE KIWI TASTE

Visit the Martinborough Wine Centre, where you can taste many wines from the region's wineries under one roof.

TASTE & EXPLORE

WINERIES

Bring your appetite to Martinborough, where Pinot Noir and excellent restaurants promise to ease you into a very happy state of mind. From Martinborough's village centre you can stroll to any or all of the 30 local vineyards, making for a unique walking-wine-tour experience.



MARTINBOROUGH

www.martinborough.com

WAIRARAPA REGION

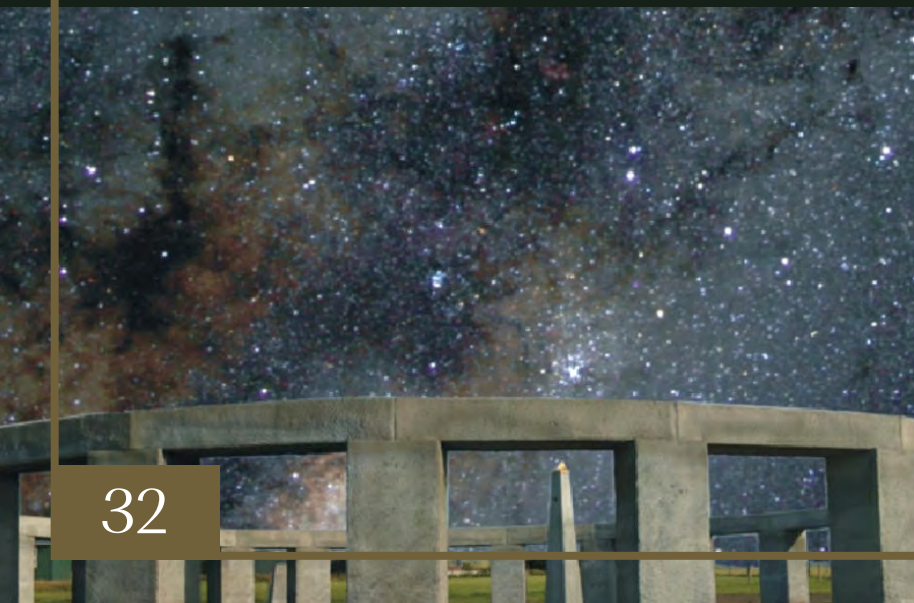
www.newzealand.com/us/wairarapa

STONEHENGE AOTEAROA

www.stonehenge-aotearoa.nz

STONEHENGE AOTEAROA

New Zealand's unique open air astronomical observatory, built following ancient knowledge of the stone circles and adapted to the conditions of New Zealand.



TRAVEL TIP

Drive directly from Wanganui Safaris down to Martinborough in the Wairarapa region. There are great accommodations and vineyards to enjoy only three hours away. The Martinborough Hotel is a popular choice. However, there are a number of Bed and Breakfasts you may consider.



WELLINGTON

OUR CITY CAPITAL



OUR SEASIDE SANCTUARY

Take a brief 1.5 hour drive from Martinborough south to the Capital city, Wellington. There is plenty to do there, but we recommend a trip to our national museum, Te Papa. The waterfront and Central Business District has plenty of fabulous restaurants and shopping to choose from and accommodation is plentiful.



SEE & SHOP

THE COOLEST LITTLE CAPITAL

Called the world's 'coolest little capital' Wellington is known for its vibrant arts scene, world class café and restaurant culture, and active outdoor lifestyle.



TE PAPA

www.tepapa.govt.nz

OTHER INFORMATION

www.wellingtonnz.com

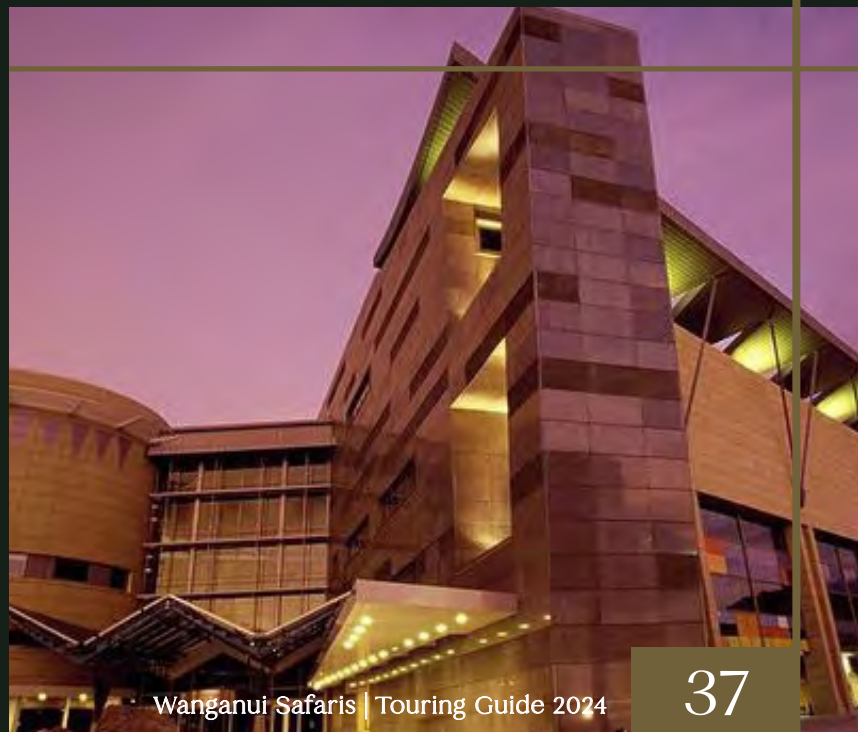
THE GOLDEN MILE

High fashion and boutique stores makeup this shopping area. Make sure to stop by Old Bank Arcade, located in a historic building that's home to top Kiwi designers.

TE PAPA, NATIONAL MUSEUM

Te Papa is New Zealand's national museum, renowned for being bicultural, scholarly, innovative, and fun.

Their collections span across five areas: Art, History, Pacific, Maori, and Natural Environment. The exhibitions are interdisciplinary and interactive, with dynamic events and displays occurring regularly.



THE SOUTH ISLAND

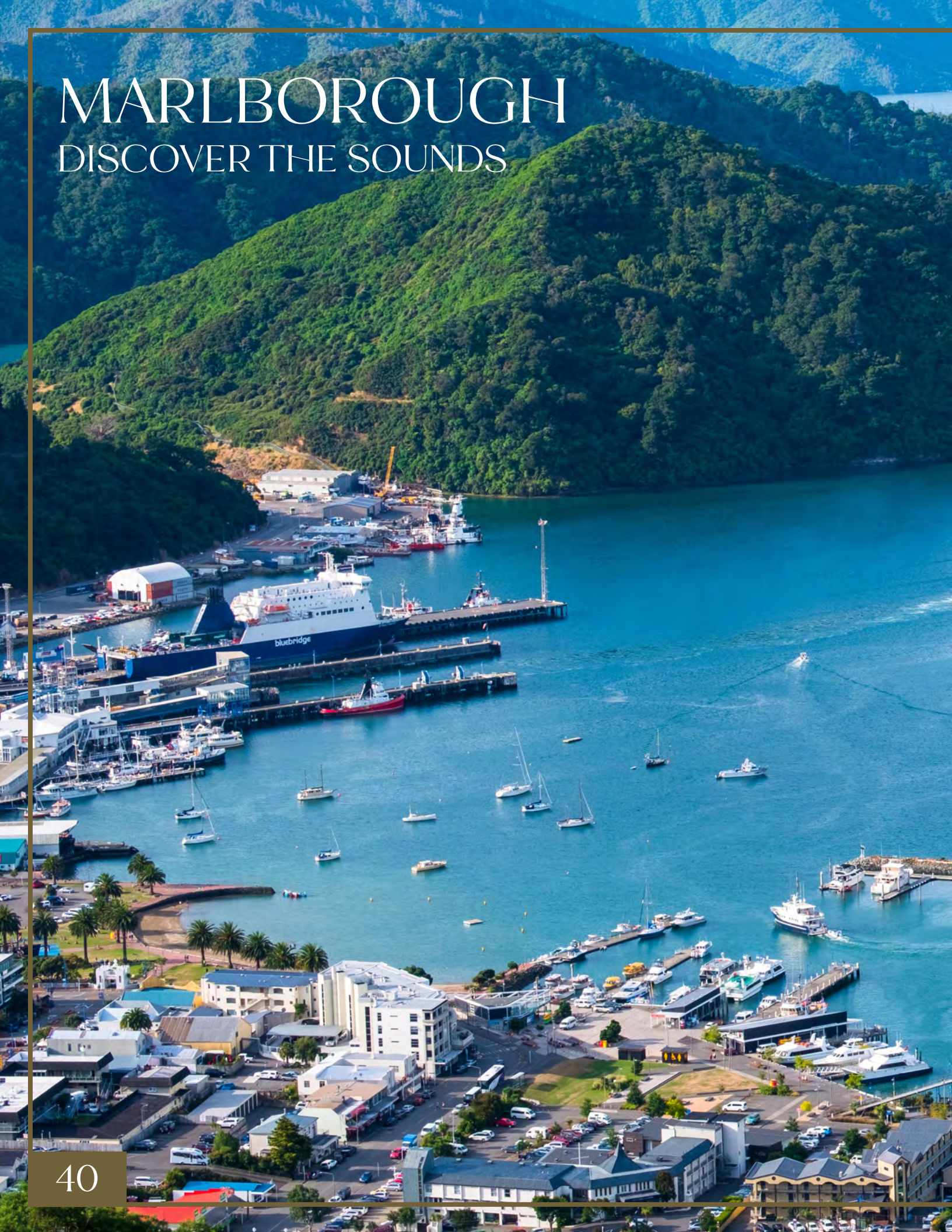
NEW ZEALAND





MARLBOROUGH

DISCOVER THE SOUNDS





EXPLORE & STAY

MARLBOROUGH SOUNDS

The Marlborough Sounds offer a spectacular environment for adventures. The 70 kilometre Queen Charlotte Track are a hiking and mountain-biking paradise. Surrounding the Queen Charlotte Track you'll find 1500 kilometres of breathtaking Marlborough Sounds' coastline – one fifth of New Zealand's total coastline – a magical place for exploring by sea kayak.



FEAUTES

- Outdoor pool
- Spa
- King suites with lake view
- Fast Wi-Fi
- Fitness center
- Non-smoking rooms
- On-site restaurant
- Breakfast included
- Laundry facilities
- On-site parking

HAPUKU LODGE

Located in one of the most beautiful places in the world, Hapuku Lodge is a 5 star Eco-Retreat just a few km's north of the eco-marine town of Kaikoura. Nestled 30 feet in the air, the tree houses sit amongst a native Kanuka Grove underneath the majestic Kaikoura Mountains.

MARLBOROUGH SOUNDS

www.marlboroughsounds.co.nz

HAPUKU LODGE TREE TOPS

www.hapukulodge.com/kaikoura



TRAVEL TIP

From a glass of world-famous Sauvignon Blanc at one of the region's numerous wineries to swimming with dolphins in the Marlborough Sounds or Whale Watching in Kaikoura, the region offers a multitude of recreational activities.

Take the Interislander ferry crossing from Wellington to Picton. The three-hour journey through the Marlborough Sounds is breathtaking. Stay in the Blenheim/Marlborough area or continue to drive to Kaikoura, one hour from Blenheim for Whale Watching and fresh seafood.





SEE & LISTEN

KAIKOURA

The seaside settlement is the most Northern district in the Canterbury region located on the East coast of the South Island (an ideal location for both North and South bound travelers). 2.5 hours drive from Christchurch, 1.5 hours from Blenheim and only two hours from Picton.

The local specialty is crayfish, you will be spoilt for choice whether you are eating in or dining out.



WHALE WATCH KAIKOURA

www.whalewatch.co.nz

DARK SKY PROJECT

www.darkskyproject.co.nz

WHALE WATCH

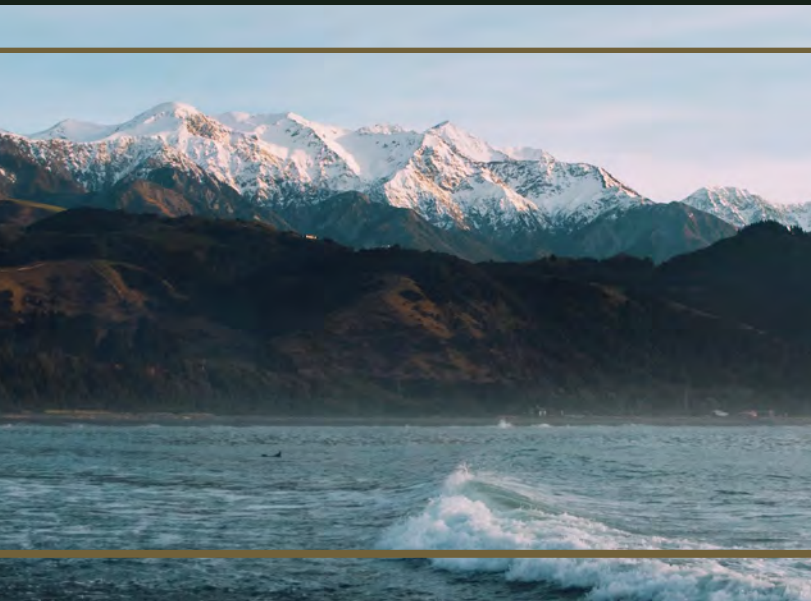
Local tour operators offer the chance to watch whales, dolphins, sea-birds and many other species of marine life on a daily basis; by boat, flight and by land. With wetsuits provided, visitors can even join dolphins and seals in their ocean environment.

We recommend the world renowned Whale Watch Kaikoura service.



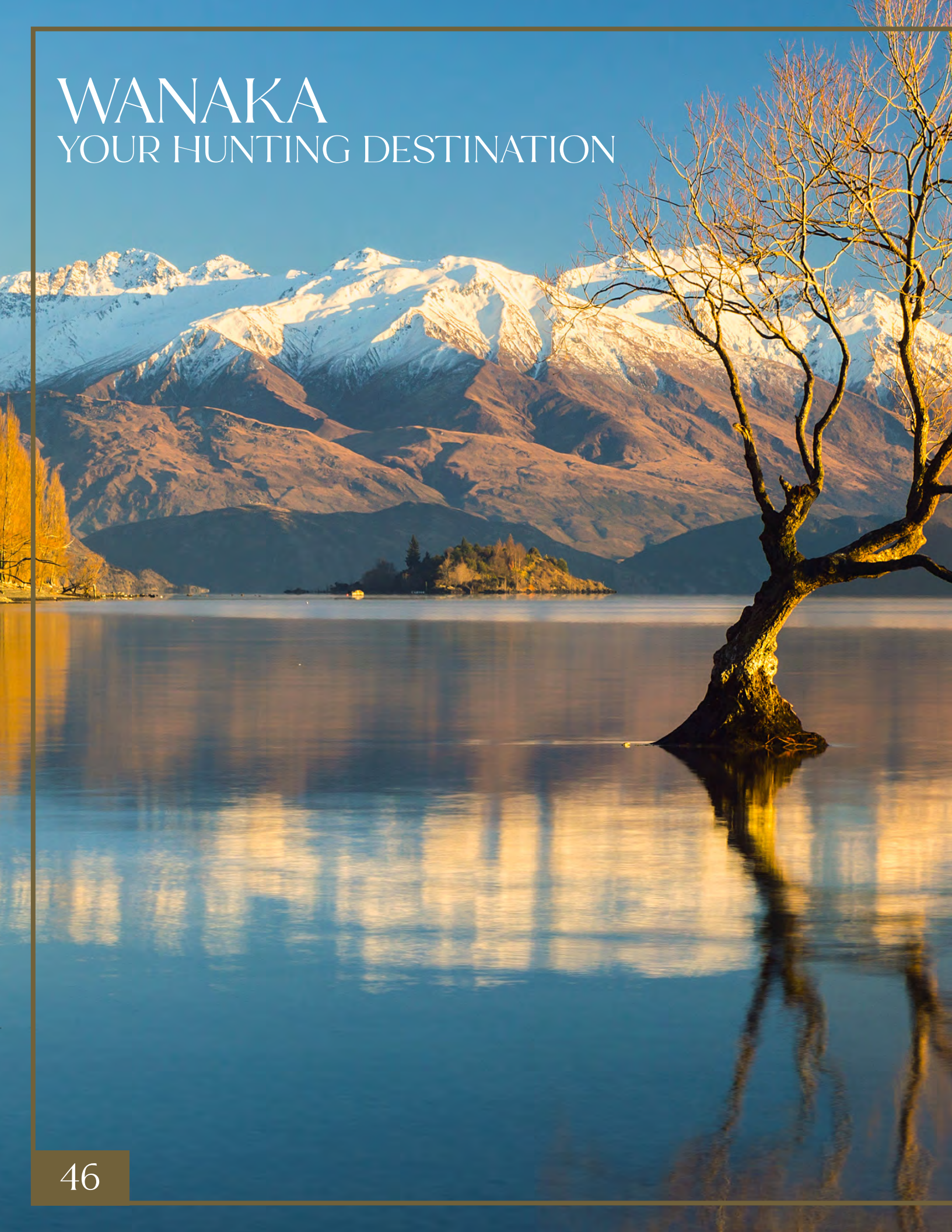
DARK SKY PROJECT

Discover the dark sky reserve at Lake Tekapo, New Zealand - one of the world's best places for stargazing. Exclusive stargazing tours from the summit of Mount John, home to the world renowned astronomical research centre.



WANAKA

YOUR HUNTING DESTINATION





EXPLORE & SIP

CHRISTCHURCH

Depending on what time of the day you depart the Marlborough area you can either head to Christchurch, our garden city, newly rebuilt following the 2011 earthquake or continue on directly to Wanaka. We recommend stopping for a superb cocktail at Gin Gin in Christchurch.



CHRISTCHURCH

www.newzealand.com/int/christchurch

BLUE POOLS

www.newzealand.com/au/feature/blue-pools-track

FIORDLAND HELI TRAVERSE

www.minaretstation.com/fiordland-heli-traverse

FIORDLAND HELI TRAVERSE

This breathtaking helicopter experience is one of our guests favourite things to do. Explore this famously remote part of New Zealand.

Pass through majestic fiords, get up close to huge waterfalls and see the region's unique wildlife in its otherwise inaccessible natural habitat. Hover over glaciers of ancient blue ice and land in the snow at the beautiful, isolated mountain lakes.

BLUE POOLS

Wander through beautiful native forests and over a swing bridge to experience the pristine waters of Makarora River's Blue Pools.

Follow the boardwalk to a viewing platform over the Blue Pools then cross the Blue Pools bridge for great views up the river gorge.

Along the way look out for large trout feeding in the pools and listen for the threatened yellowhead/mohua, which can often be heard in the canopy.



TRAVEL TIP

The drive from Christchurch to Wanaka is six hours or you may decide to tour via Arthur's Pass and down the West Coast to Wanaka. This is a much longer drive approximately eight hours but worth the effort with magnificent glaciers and untouched landscape to visit.



QUEENSTOWN

THE ADVENTURE CAPITAL



WHERE LUXURY MEETS ADRENALINE

Surrounded by majestic mountains and set on the shores of crystal clear Lake Wakatipu, the natural beauty and the unique energy of the region create the perfect backdrop for a holiday full of adventure, exploration or relaxation.

TRAVEL TIP

Following your alpine hunt, it's essential to complete your trip with a visit to the picturesque Queenstown. Only one hour from Wanaka, Queenstown is a fantastic place for adventure seekers, shoppers and those who just want to relax.

EXPERIENCE

ADRENALINE SPORTS

Home to the latest and greatest adventure activities, there are activities for every thrill seeker, from iconic bungy jumping to whitewater rafting, canyon swinging, the Skyline Luge and thrills on a jet boat. Queenstown has it all.



SHOTOVER JET

World famous as the ultimate jet boat experience, The Shotover Jet has thrilled over 3 million people since 1970. Take a unique breathtaking ride through dramatic and narrow canyons, and hold on tight for Queenstown's only exhilarating full 360 offering.

NEVIS SWING & BUNGY

The most famous swing in the world! Swing by yourself or tandem with a friend! Forwards, backwards, upside down - you choose. You'll complete the 300m arc, bellowing at the top of your lungs, wanting to do it all over again once you're back on solid ground.



ADRENALINE SPORTS

www.newzealand.com/us/queenstown

SHOTOVER JET

www.shotoverjet.com

NEVIS SWING & BUNGY

www.bungy.co.nz



EXPLORE & SHOP

ARROWTOWN

You'll be enchanted by Historic Arrowtown, a New Zealand treasure. It is a scenic 20 minute drive from Queenstown, and close to its ski fields.

Arrowtown is charming and quirky – a delightful gold rush village nestled below the beautiful peaks that surround the sparkling Arrow River.



ARROWTOWN

www.arrowtown.com

ONSEN HOT POOLS

www.onsen.co.nz

QUEENSTOWN INFORMATION

www.newzealand.com/us/queenstown

ONSEN HOT POOLS

A range of idyllic cedar-lined hot pools overlooking the Shotover River, and a newly expanded day spa facility with exclusive use hot tubs, the relaxation and pampering on offer here is second to none in the region, as endorsed by recent win in the 2023 World Luxury Spa Awards.

GOLD CLASS

From high street chain stores to local fashion boutiques, Queenstown's clothing and shoe shops are a collection of the latest designs and must-have basics. Many of our clients pick up a special local design to remember the visit by.



STAY & EXPERIENCE

SOFITEL QUEENSTOWN

French antique chic sits aside New Zealand's sophisticated modern designs at this centrally located boutique hotel. Providing exceptional personal service, the lobby and lounge flow into a resplendent reception enclave, invoking the panache of Paris and warm hospitality inherent to any Queenstown stay.



SOFITEL

www.sofitel.com/queenstown

OTHER

www.newzealand.com/us/queenstown



FEAUTES

- Private jacuzzis
- Spa
- Luxury king suites with lake and city views
- Fast Wi-Fi
- Fitness center
- Non-smoking rooms
- On-site restaurant and bar
- Laundry facilities
- On-site self and valet parking




THE LODGE BAR

Wind down each night at the swanky Lodge Bar, located in the heart of downtown Queenstown. Sip on craft cocktails whilst watching the beautiful New Zealand sunset at this rustic bar, surrounded by the breathtaking Lake Wakatipu.

MILFORD SOUND

DISCOVER THE SOUNDS





Despite being one of the most accessible fiords, Milford Sound remains quiet and still, bounded by steep cliffs and dense rainforest. Rain or shine, Milford Sound continues to captivate even the most experienced traveler.

TRAVEL TIP

We can arrange a private guided helicopter tour, stopping on glaciers and the west coast to catch fresh crayfish.

TROUT FISHING

WORLD RENOWNED



NORTH & SOUTH ISLANDS

TARATA FISHING

Located on the stunning Rangitaiki River, Tarata Fishing offers some of the countries best Trout fishing. Nestled within the towering Ruahine Ranges, this is an ideal retreat for the serious or novice fisherman/woman.



NORTH FISHING

www.tarata.co.nz

SOUTH FISHING

www.newzealand.com/us/plan/business/backcountry-new-zealand-hunting-and-fly-fishing-guides



SOUTH ISLAND TROUT STALKERS

South Island Trout Stalkers operate guided Fly Fishing tours based out of Glenorchy, Queenstown, TeAnau and Wanaka. These locations are New Zealand fly fishing paradise with glaciated valleys flowing with crystal clear rivers and streams and breathtaking views.

GOLF COURSES

EXCLUSIVE AND PICTURESQUE



PLAY IN WONDERLAND

PREMIER GOLF

New Zealand is a country blessed with more than its fair share of unspoilt natural beauty. New Zealand golf has come of age with visionaries creating, over the last decade or so, some of the most spectacular golf courses in the world for you to play.



KAURI CLIFFS, MATAURI BAY

www.robertsonlodges.com/the-lodges/kauri-cliffs

CAPE KIDNAPPERS, HAWKES BAY

www.capekidnappers.com

THE HILLS, ARROWTOWN

www.thehills.co.nz



PICTURED LEFT

Cape Kidnappers Golf Course has been hailed as one of the great modern marvels in golf featuring at number 38 in the Top 100 Courses in the world.



DISCOVER NEW ZEALAND

ENJOY YOUR TRIP

As is evident from this journey through our New Zealand, there are bountiful new experiences to be had along the way. Take the time, explore our small nation and plan the trip that suits you.

Take a car and see what you find. New Zealand is in-congested, friendly and safe to explore, just be sure to stick to the left hand side. Fly and you will find yourself in a different world, in a little less than an hour. Our compact geography takes you from mountains to beaches in the blink of an eye.



PLAN WITH WANGANUI SAFARIS

We have taken the time to create 'Our Guide to New Zealand', so please let us assist you in any way we can. Contact us, so that we may guide you in the right direction and ensure that our hospitality does not evaporate as you leave our lodge doors. We are committed to providing you the best possible New Zealand experience.



WANGANUI SAFARIS
NEW ZEALAND

+64 272-777-491

wsafaris@xtra.co.nz

www.wsafaris.com